



HIKVISION

Video Intercom Indoor Station

User Manual

UD.6L0206D1094A01

User Manual

©2016 Hangzhou Hikvision Digital Technology Co., Ltd.

This user manual is intended for users of the models below:

Series	Model
Indoor Station (6-Series)	DS-KH6310-W
	DS-KH6310
	DS-KH6310-W(L)
	DS-KH6210(L)
Indoor Station (8-Series)	DS-KH8301-WT
	DS-KH8300-T
	DS-KH8501-WT
	DS-KH8500-T

It includes instructions on how to use the Product. The software embodied in the Product is governed by the user license agreement covering that Product.

About this Manual

This Manual is subject to domestic and international copyright protection. Hangzhou Hikvision Digital Technology Co., Ltd. (“Hikvision”) reserves all rights to this manual. This manual cannot be reproduced, changed, translated, or distributed, partially or wholly, by any means, without the prior written permission of Hikvision.

Trademarks

HIKVISION and other Hikvision marks are the property of Hikvision and are registered trademarks or the subject of applications for the same by Hikvision and/or its affiliates. Other trademarks mentioned in this manual are the properties of their respective owners. No right of license is given to use such trademarks without express permission.

Disclaimer

TO THE MAXIMUM EXTENT PERMITTED BY APPLICABLE LAW, HIKVISION MAKES NO WARRANTIES, EXPRESS OR IMPLIED, INCLUDING WITHOUT LIMITATION THE IMPLIED WARRANTIES OF MERCHANTABILITY AND FITNESS FOR A PARTICULAR PURPOSE, REGARDING THIS MANUAL. HIKVISION DOES NOT WARRANT, GUARANTEE, OR MAKE ANY REPRESENTATIONS REGARDING THE USE OF THE MANUAL, OR THE CORRECTNESS, ACCURACY, OR RELIABILITY OF INFORMATION CONTAINED HEREIN. YOUR USE OF THIS MANUAL AND ANY RELIANCE ON THIS MANUAL SHALL BE WHOLLY AT YOUR OWN RISK AND RESPONSIBILITY.

TO THE MAXIMUM EXTENT PERMITTED BY APPLICABLE LAW, IN NO EVENT WILL HIKVISION, ITS DIRECTORS, OFFICERS, EMPLOYEES, OR AGENTS BE LIABLE TO YOU FOR ANY SPECIAL, CONSEQUENTIAL, INCIDENTAL, OR INDIRECT DAMAGES, INCLUDING, AMONG OTHERS, DAMAGES FOR LOSS OF BUSINESS PROFITS, BUSINESS INTERRUPTION, SECURITY BREACHES, OR LOSS OF DATA OR DOCUMENTATION, IN CONNECTION WITH THE USE OF OR RELIANCE ON THIS MANUAL, EVEN IF HIKVISION HAS BEEN ADVISED OF THE POSSIBILITY OF SUCH DAMAGES.

SOME JURISDICTIONS DO NOT ALLOW THE EXCLUSION OR LIMITATION OF LIABILITY OR CERTAIN DAMAGES, SO SOME OR ALL OF THE ABOVE EXCLUSIONS OR LIMITATIONS MAY NOT APPLY TO YOU.

Support

Should you have any questions, please do not hesitate to contact your local dealer.

Regulatory Information

FCC Information

Please take attention that changes or modification not expressly approved by the party responsible for compliance could void the user's authority to operate the equipment.

FCC compliance: This equipment has been tested and found to comply with the limits for a Class A digital device, pursuant to part 15 of the FCC Rules. These limits are designed to provide reasonable protection against harmful interference when the equipment is operated in a commercial environment. This equipment generates, uses, and can radiate radio frequency energy and, if not installed and used in accordance with the instruction manual, may cause harmful interference to radio communications. Operation of this equipment in a residential area is likely to cause harmful interference in which case the user will be required to correct the interference at his own expense.

FCC Conditions

This device complies with part 15 of the FCC Rules. Operation is subject to the following two conditions:

1. This device may not cause harmful interference.
2. This device must accept any interference received, including interference that may cause undesired operation.

EU Conformity Statement



This product and - if applicable - the supplied accessories too are marked with "CE" and comply therefore with the applicable harmonized European standards listed under the EMC Directive 2004/108/EC, the RoHS Directive 2011/65/EU.



2012/19/EU (WEEE directive): Products marked with this symbol cannot be disposed of as unsorted municipal waste in the European Union. For proper recycling, return this product to your local supplier upon the purchase of equivalent new equipment, or dispose of it at designated collection points. For more information see: www.recyclethis.info



2006/66/EC (battery directive): This product contains a battery that cannot be disposed of as unsorted municipal waste in the European Union. See the product documentation for specific battery information. The battery is marked with this symbol, which may include lettering to indicate cadmium (Cd), lead (Pb), or mercury (Hg). For proper recycling, return the battery to your supplier or to a designated collection point. For more information see: www.recyclethis.info

Industry Canada ICES-003 Compliance

This device meets the CAN ICES-3 (A)/NMB-3(A) standards requirements.



Safety Instruction

These instructions are intended to ensure that user can use the product correctly to avoid danger or property loss.

The precaution measure is divided into **Warnings** and **Cautions**:

Warnings: Neglecting any of the warnings may cause serious injury or death.

Cautions: Neglecting any of the cautions may cause injury or equipment damage.

	
Warnings Follow these safeguards to prevent serious injury or death.	Cautions Follow these precautions to prevent potential injury or material damage.



Warnings

All the electronic operation should be strictly compliance with the electrical safety regulations, fire prevention regulations and other related regulations in your local region.

Please use the power adapter, which is provided by normal company. The power consumption cannot be less than the required value.

Do not connect several devices to one power adapter as adapter overload may cause over-heat or fire hazard.

Please make sure that the power has been disconnected before you wire, install or dismantle the device.

When the product is installed on wall or ceiling, the device shall be firmly fixed.

If smoke, odors or noise rise from the device, turn off the power at once and unplug the power cable, and then please contact the service center.

If the product does not work properly, please contact your dealer or the nearest service center. Never attempt to disassemble the device yourself. (We shall not assume any responsibility for problems caused by unauthorized repair or maintenance.)



Cautions

Do not drop the device or subject it to physical shock, and do not expose it to high electromagnetic radiation. Avoid the equipment installation on vibrations surface or places subject to shock (ignorance can cause equipment damage).

Do not place the device in extremely hot (refer to the specification of the device for the detailed operating temperature), cold, dusty or damp locations, and do not expose it to high electromagnetic radiation.

The device cover for indoor use shall be kept from rain and moisture.

Exposing the equipment to direct sun light, low ventilation or heat source such as heater or radiator is forbidden (ignorance can cause fire danger).

Do not aim the device at the sun or extra bright places. A blooming or smear may occur otherwise (which is not a malfunction however), and affecting the endurance of sensor at the same time.

Please use the provided glove when open up the device cover, avoid direct contact with the device cover, because the acidic sweat of the fingers may erode the surface coating of the device cover.

Please use a soft and dry cloth when clean inside and outside surfaces of the device cover, do not use alkaline detergents.

Please keep all wrappers after unpack them for future use. In case of any failure occurred, you need to return the device to the factory with the original wrapper. Transportation without the original wrapper may result in damage on the device and lead to additional costs.

Improper use or replacement of the battery may result in hazard of explosion. Replace with the same or equivalent type only. Dispose of used batteries according to the instructions provided by the battery manufacturer.

Table of Contents

1 Overview	1
1.1 Introduction.....	1
1.2 Main Features.....	1
2 Appearance	2
2.1 Appearance of DS-KH8501-WT/DS-KH8500-T.....	2
2.2 Appearance of DS-KH8301-WT/DS-KH8300-T.....	3
2.3 Appearance of DS-KH6310-W/DS-KH6310.....	5
2.4 Appearance of DS-KH6310-W(L)/DS-KH6210(L).....	6
3 Typical Application	9
4 Terminals and Interfaces	10
4.1 Terminals and Interfaces of DS-KH8501-WT/ DS-KH8500-T.....	10
4.2 Terminals and Interfaces of DS-KH8301-WT/ DS-KH8300-T.....	11
4.3 Terminals and Interfaces of DS-KH6310-W/ DS-KH6310.....	13
4.4 Terminals and Interfaces of DS-KH6310-W(L)/ DS-KH6210(L).....	14
5 Installation and Wiring	16
5.1 Indoor Station Installation.....	16
5.1.1 Installation Plate.....	16
5.1.2 Wall Mounting with Gang Box of Indoor Station.....	16
5.2 Indoor Station Wiring.....	19
5.2.1 Wiring of DS-KH8501-WT/DS-KH8500-T/DS-KH8301-WT/ DS-KH8300-T.....	19
5.2.2 Wiring of DS-KH6310-W/DS-KH6310.....	22
5.2.3 Wiring of DS-KH6310-W(L)/DS-KH6210(L).....	23
6 Before You Start	24
7 Video Intercom Device Set-up Tool	25
7.1 Setting a Community Structure.....	25
7.1.1 Setting Project.....	25
7.1.2 Setting Community.....	26
7.1.3 Setting Building.....	27
7.1.4 Setting Floor.....	27
7.1.5 Setting Room.....	28
7.2 Activating and Setting Indoor Station.....	29
8 Batch Configuration Tool	31
8.1 Activating Device Remotely.....	31
8.2 Editing Network Parameters.....	32
8.3 Adding Device.....	33
8.3.1 Adding Online Devices.....	33

8.3.2 Adding by IP Address, IP Segment or Port No.	34
8.4 Remote Configuration	36
8.4.1 System	36
8.4.2 Video Intercom	42
8.4.3 Network	47
9 Setting the Door Station via iVMS-4200	50
9.1 System Configuration	50
9.2 Device Management	50
9.3 Group Management	50
9.3.1 Adding Group	51
9.3.2 Assigning Devices to Group	52
9.3.3 Modifying Device Information	53
9.3.4 Deleting Device	53
9.4 Card Management	54
9.4.1 Unauthorized Card Management	54
9.4.2 Normal Card Management	60
9.5 Notice Management	61
9.5.1 Creating Notice Information	61
9.5.2 Querying Notice Information	62
9.5.3 Querying Call Logs	63
9.5.4 Querying Unlocking Log	64
9.6 Device Arming Control	64
9 Local Operation	66
10.1 Activating Device Locally	66
10.2 User Interface Description	67
10.2.1 User Interface of Indoor Station	67
10.2.2 User Interface of Indoor Extension	68
10.2.3 Indoor Station Status	68
10.2.4 Indoor Extension Status	70
10.2.5 Arming Status	71
10.3 Settings	71
10.3.1 Password Settings	72
10.3.2 Sound Settings	73
10.3.3 No Disturbing Settings	74
10.3.4 Arming Mode Settings	75
10.3.5 Zone Settings	76
10.3.6 System Maintenance	77
10.3.7 Configuration Settings	78
10.4 Call Settings	85
10.4.1 Adding Contact	85
10.4.2 Calling Resident	86
10.4.3 Receiving Call	87
10.4.4 Viewing Call Logs	88
10.4.5 Calling Management Center and Calling Elevator	89
10.5 Information Management	90

10.6 Live View	92
Appendix	94
Installation Notice	94
Wiring Cables	94
Specification	94
Spectification of DS-KH8501-WT/DS-KH8500-T	94
Specification of DS-KH8301-WT/DS-KH8300-T	96
Specification of DS-KH6310-W/DS-KH6310	97
Specification of DS-KH6310-W(L)/DS-KH6210(L)	98

1 Overview

1.1 Introduction

The video intercom system can realize functions such as video intercom, resident-to-resident video call, live view of HD video, access control, one-card system, elevator linkage, 8-ch zone alarm, notice information and visitor messages to provide a complete smart community video intercom system.

The video intercom indoor station is mainly applied to situations such as community, villa, and official buildings.

1.2 Main Features

- Video intercom function
- Remote unlocking function
- Resident-to-resident audio call
- Live view of HD video
- Voice message function
- Auto-respond and no disturbing mode
- Noise suppression and echo cancellation
- 8-ch zone alarm and SOS calling function
- Community notice
- Convenient installation with the bracket, batch settings, and power over video/audio distributor (DS-KAD606, DS-KAD612)

2 Appearance

2.1 Appearance of DS-KH8501-WT/DS-KH8500-T

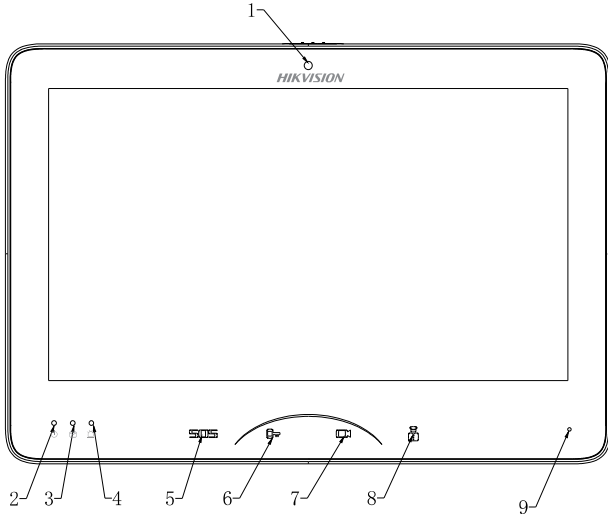


Figure 2-1 Front Pane

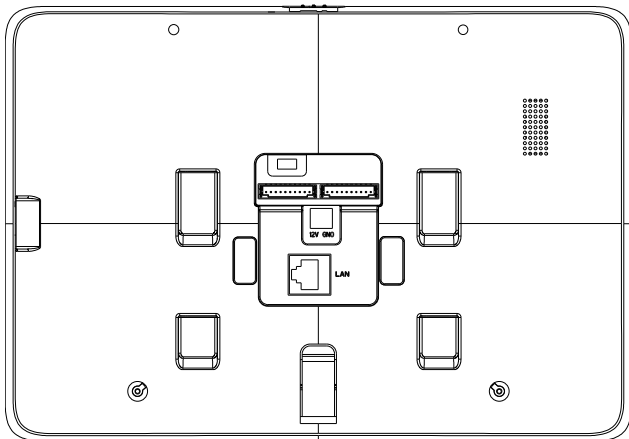


Figure 2-2 Rear Panel

Table 2-1 Description

No.	Description
1	Built-in Camera (Only DS-KH8501-WT supports)
2	Power Supply Indicator
3	Information Indicator
4	Alarm Indicator
5	SOS Touch Key
6	Remote Unlock Touch Key
7	Live View Touch Key
8	Management Center Touch Key
9	Microphone



Hold down the **SOS** touch key to trigger a SOS alarm and upload the alarm message to the management center (iVMS-4200 client software or the master station).

2.2 Appearance of DS-KH8301-WT/DS-KH8300-T

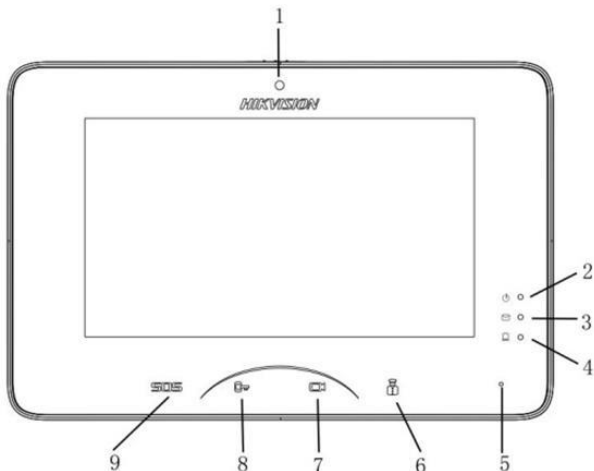


Figure 2-3 Front Panel

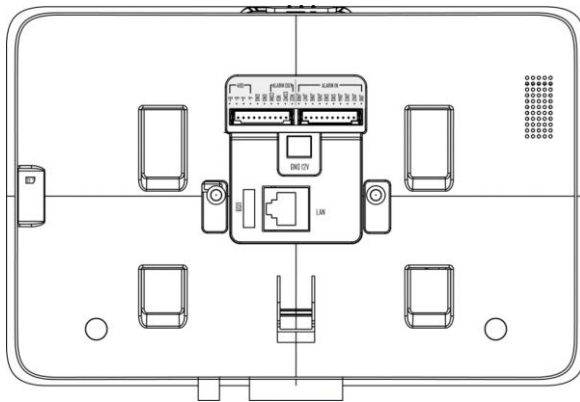


Figure 2-4 Rear Panel

Table 2-2 Descriptions

No.	Description
1	Built-in Camera (Only DS-KH8301-WT supports)
2	Power Supply Indicator
3	Information Indicator
4	Alarm Indicator
5	Microphone
6	Management Center Touch Key
7	Live View Touch Key
8	Remote Unlock Touch Key
9	SOS Touch Key



Hold down the **SOS** touch key to trigger a SOS alarm and upload the alarm message to the management center (iVMS-4200 client software or the master station).

2.3 Appearance of DS-KH6310-W/DS-KH6310

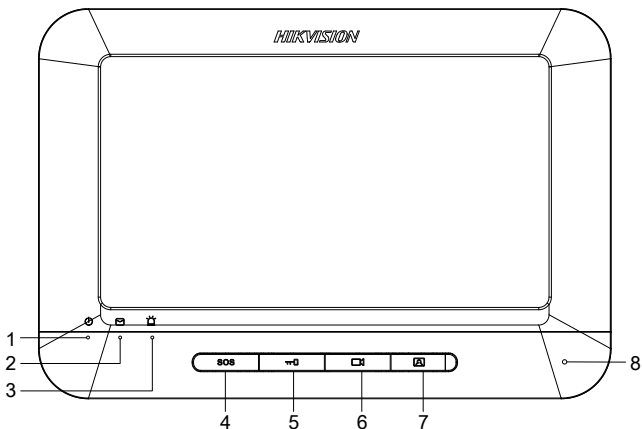


Figure 2-5 Front Panel

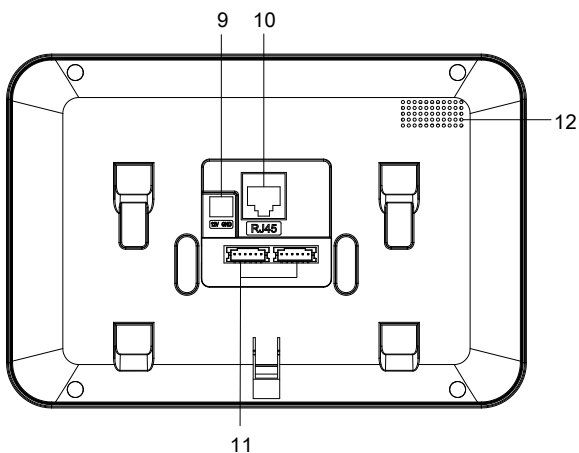


Figure 2-6 Rear Panel

Table 2-3 Descriptions

No.	Description
1	Power Supply Indicator
2	Information Indicator
3	Alarm Indicator

4	SOS Key
5	Unlock Key
6	Live View Key
7	Management Center Key
8	Microphone
9	DC 12V Power Supply
10	Network Interface
11	Terminals and Interfaces of Cables
12	Loudspeaker



Hold down the **SOS** key to trigger a SOS alarm and upload the alarm message to the management center (iVMS-4200 client software or the master station).

2.4 Appearance of DS-KH6310-W(L)/DS-KH6210(L)

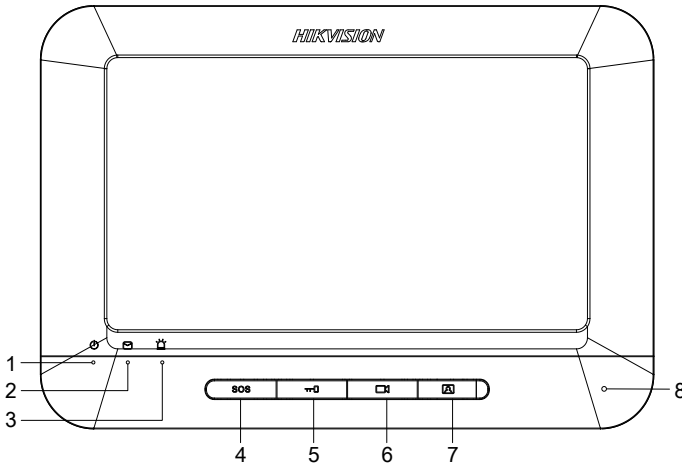


Figure 2-7 Front Panel

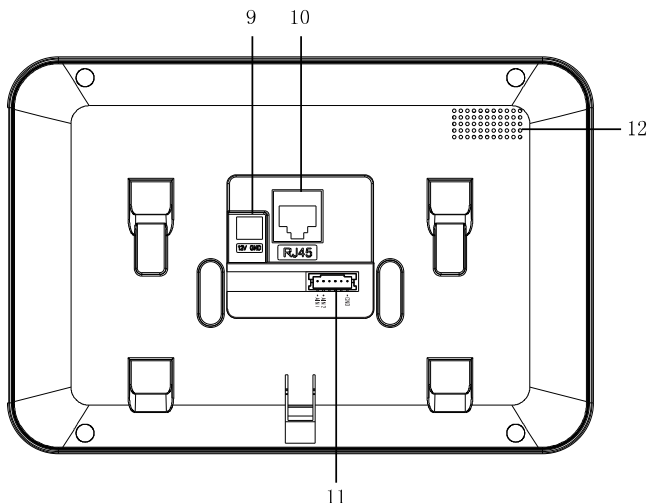


Figure 2-8 Rear Panel of DS-KH6310-W(L)/DS-KH6210(L)

Table 2-4 Descriptions of DS-KH6310-W(L)

No.	Description
1	Power Supply Indicator
2	Information Indicator
3	Alarm Indicator
4	SOS Key
5	Unlock Key
6	Live View Key
7	Management Center Key
8	Microphone
9	DC 12V Power Supply
10	Network Interface
11	Terminals and Interfaces of Cables
12	Loudspeaker



Hold down the **SOS** key to trigger a SOS alarm and upload the alarm message to the management center (iVMS-4200 client software or the master station).

Table 2-5 Descriptions of DS-KH6210(L)

No.	Description	
1	Power Supply Indicator	
2	Information Indicator	
3	Alarm Indicator	
4	SOS Key (hold down)	Return key (press)
5	Unlock Key (hold down)	Direction keys ▲ and ◀ (press)
6	Live View Key (hold down)	Direction keys ▼ and ▶ (press)
7	Management Center Key (hold down)	Confirm key (press)
8	Microphone	
9	DC 12V Power Supply	
10	Network Interface	
11	Terminals and Interfaces of Cables	
12	Loudspeaker	

3 Typical Application

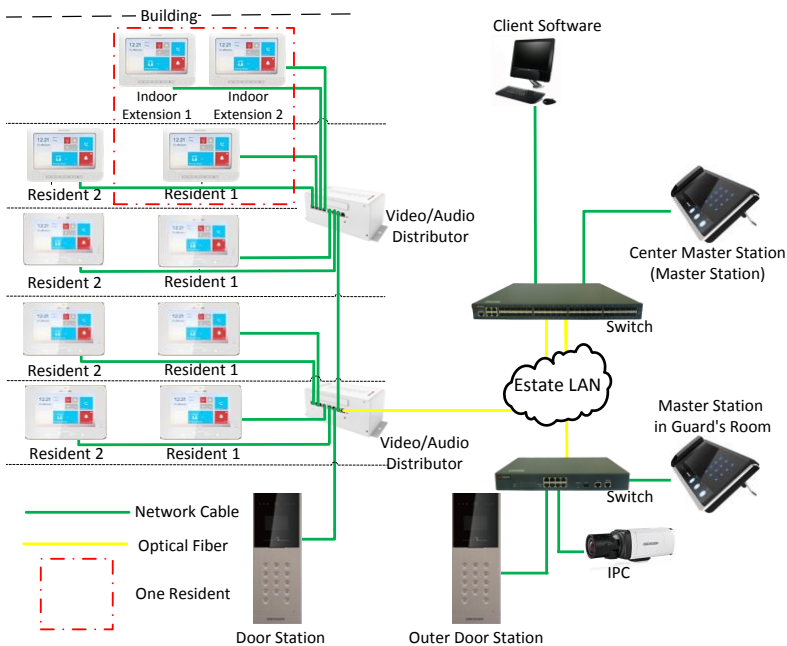


Figure 3-1 Typical Application of Indoor Station



Indoor extensions in a resident are in the same LAN with other devices in a video intercom system.

4 Terminals and Interfaces

4.1 Terminals and Interfaces of DS-KH8501-WT/ DS-KH8500-T

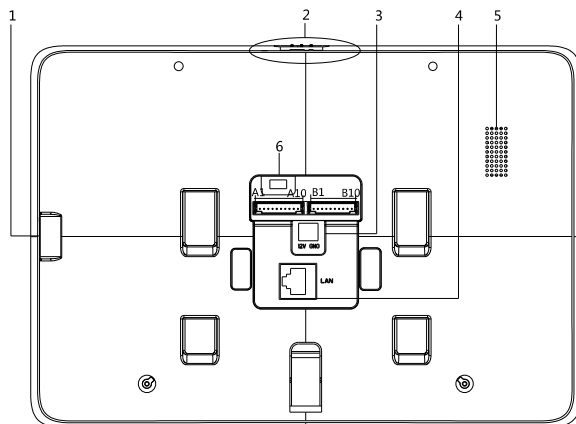


Figure 4-1 Rear Panel of DS-KH8501-WT/DS-KH8500-T

Table 4-1 Descriptions of Terminals and Interfaces

Name	No.	Interface	Description
TF Card Slot	1		TF Card Slot
Mechanical Switch	2		Mechanical Switch of Built-in Camera
Power Supply	3	+12V	DC 12V Power Supply + Input
		GND	DC 12V GND - Input
Network Interface	4	LAN	Network Interface (Support Private POE)
Loudspeaker	5		Loudspeaker
Serial Port	6		Serial Port
485 Communication Port	A1	RS485B+	Reserved
	A2	RS485B-	
	A3	RS485A+	
	A4	RS485A-	

Name	No.	Interface	Description
Grounding	A5	GND	Grounding
	A6	GND	Grounding
ALARM OUT (Alarm Output)	A7	COM1	Alarm Relay Output Terminal 1 (Dry Contact)
	A8	NO1	
	A9	COM2	Alarm Relay Output Terminal 2 (Dry Contact)
	A10	NO2	
ALARM IN (Zone Input)	B1	JIN8	Zone Detector Input Terminal 8
	B2	JIN7	Zone Detector Input Terminal 7
	B3	JIN6	Zone Detector Input Terminal 6
	B4	JIN5	Zone Detector Input Terminal 5
	B5	GND	Grounding
	B6	GND	Grounding
	B7	JIN4	Zone Detector Input Terminal 4
	B8	JIN3	Zone Detector Input Terminal 3
	B9	JIN2	Zone Detector Input Terminal 2
	B10	JIN1	Zone Detector Input Terminal 1

4.2 Terminals and Interfaces of DS-KH8301-WT/ DS-KH8300-T

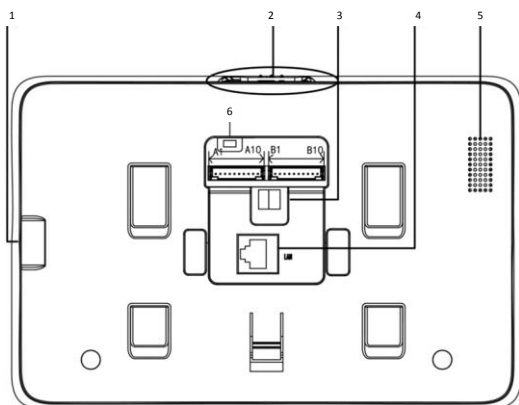


Figure 4-2 Rear Panel of DS-KH8301-WT/DS-KH8300-T

Table 4-2 Descriptions of Terminals and Interfaces

Name	No.	Interface	Description
TF Card Slot	1		TF Card Slot
Mechanical Switch	2		Mechanical Switch of Built-in Camera
Power Supply	3	+12V	DC 12V Power Supply + Input
		GND	DC 12V GND - Input
Network Interface	4	LAN	Network Interface (Support Private POE)
Loudspeaker	5		Loudspeaker
Serial Port	6		Serial Port
485 Communication Port	A1	RS485B+	Reserved
	A2	RS485B-	
	A3	RS485A+	
	A4	RS485A-	
Grounding	A5	GND	Grounding
	A6	GND	Grounding
ALARM OUT (Alarm Output)	A7	COM1	Alarm Relay Output Terminal 1 (Dry Contact)
	A8	NO1	
	A9	COM2	Alarm Relay Output Terminal 2 (Dry Contact)
	A10	NO2	
ALARM IN (Zone Input)	B1	JIN8	Zone Detector Input Terminal 8
	B2	JIN7	Zone Detector Input Terminal 7
	B3	JIN6	Zone Detector Input Terminal 6
	B4	JIN5	Zone Detector Input Terminal 5
	B5	GND	Grounding
	B6	GND	Grounding
	B7	JIN4	Zone Detector Input Terminal 4
	B8	JIN3	Zone Detector Input Terminal 3
	B9	JIN2	Zone Detector Input Terminal 2
	B10	JIN1	Zone Detector Input Terminal 1

4.3 Terminals and Interfaces of DS-KH6310-W/ DS-KH6310

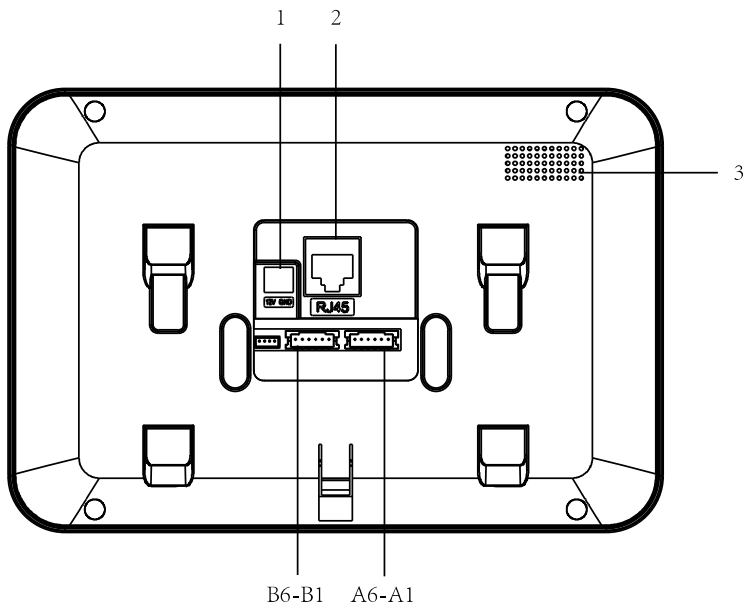


Figure 4-3 Rear Panel of DS-KH6310-W/DS-KH6310

Table 4-3 Descriptions of Terminals and Interfaces

Name	No.	Interface	Description
Power Supply	1	+12V	DC 12V Power Supply + Input
		GND	DC 12V GND - Input
Network Interface	2	LAN	Network Interface (Support Private POE)
Loudspeaker	3		Loudspeaker
Ports and Interfaces	A1	GND	Grounding
	A2	AOUT	Alarm Relay Output
	A3	AIN8	Zone Detector Input Terminal 8
	A4	AIN7	Zone Detector Input Terminal 7
	A5	AIN6	Zone Detector Input Terminal 6
	A6	AIN5	Zone Detector Input Terminal 5
	B1	AIN4	Zone Detector Input Terminal 4

Name	No.	Interface	Description
	B2	AIN3	Zone Detector Input Terminal 3
	B3	AIN2	Zone Detector Input Terminal 2
	B4	AIN1	Zone Detector Input Terminal 1
	B5	RS485+	Reserved

4.4 Terminals and Interfaces of DS-KH6310-W(L)/DS-KH6210(L)

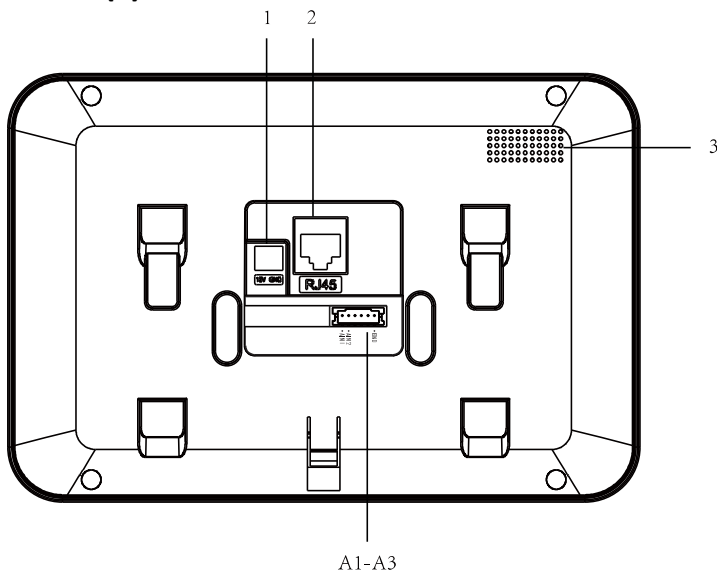


Figure 4-4 Rear Panel of DS-KH6310-W(L)/DS-KH6210(L)

Table 4-4 Descriptions of Terminals and Interfaces

Name	No.	Interface	Description
Power Supply	1	+12V	DC 12V Power Supply + Input
		GND	DC 12V GND - Input
Network Interface	2	LAN	Network Interface (Support Private POE)
Loudspeaker	3		Loudspeaker
Ports and Interfaces	A1	AIN1	Zone Detector Input Terminal 1

Name	No.	Interface	Description
	A2	AIN2	Zone Detector Input Terminal 2
	A3	GND	Grounding

5 Installation and Wiring

5.1 Indoor Station Installation

To install the indoor station onto the wall, an installation plate and a gang box are required. The gang box of 8-series and 6-series indoor stations is the same.

5.1.1 Installation Plate

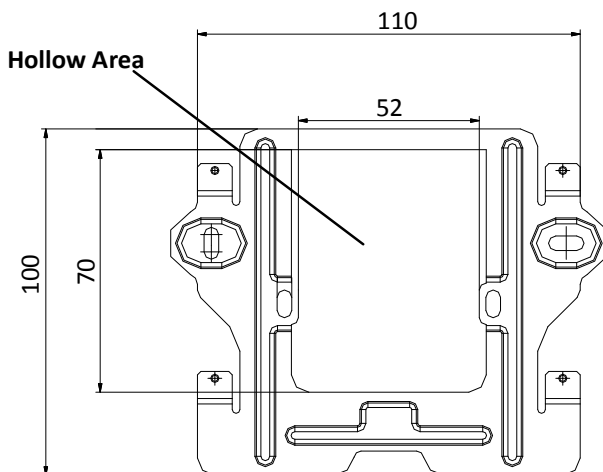


Figure 5-1 Dimensions of Installation Plate



- The dimension of gang box of indoor station is: 75 (width) × 75 (length) × 50 (depth) mm.
- The dimensions above are theoretical. The actual size can be slightly larger than the theoretical dimension.

5.1.2 Wall Mounting with Gang Box of Indoor Station

The steps of wall mounting with gang box of indoor stations are the same. Here we take the steps of wall mounting of DS-KH6310 model as an example.

Steps:

1. Take the gang box, installation plate and screws from the packing box.

2. Chisel a hole in the wall for inserting the gang box. The size of the hole should be 76 (width) × 76 (length) × 50 (depth) mm.
3. Insert the gang box into the hole.

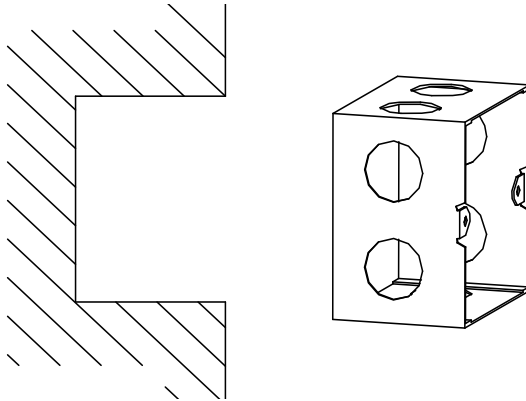


Figure 5-2 Insert the Gang Box

4. Attach the installation plate to the gang box and align the screw holes of the installation plate with the screw holes of the gang box.
5. Insert 2 PA4 screws into the screw holes to fix the installation plate onto the gang box.

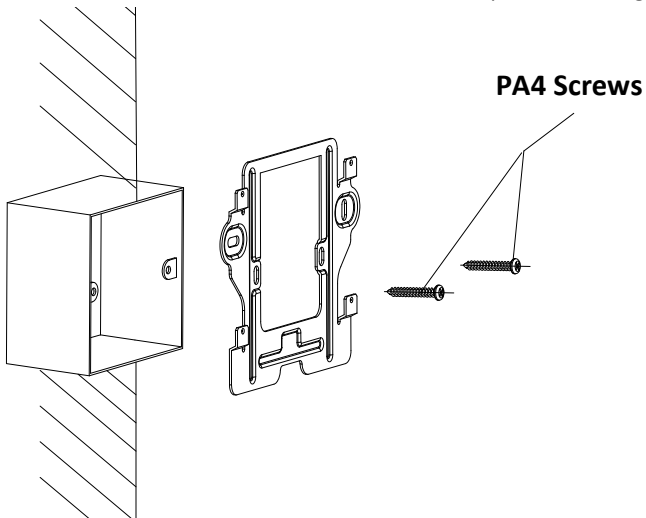


Figure 5-3 Attach the Installation Plate

6. After installing the installation plate, install the indoor station onto the installation plate according to the direction of the arrow, as shown in the figure below.

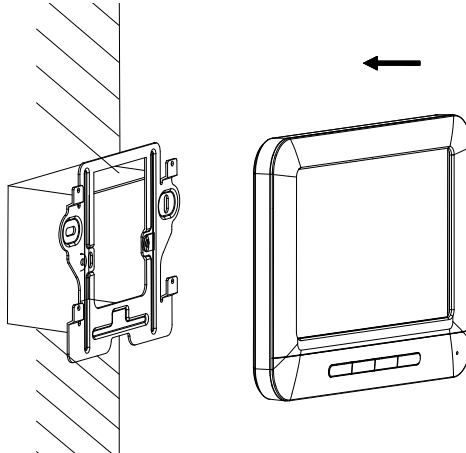


Figure 5-4 Install the Indoor Station

7. Pull the device downwards to hook the indoor station with the installation plate after inserting the indoor station into the gang box.
8. Secure the door station by locking the lock catch on the rear panel of indoor station onto the lock hole of the installation plate, as shown in the figure below.

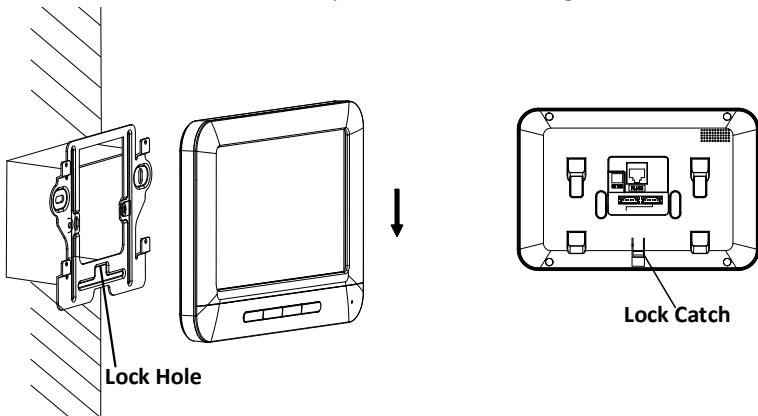


Figure 5-5 Secure the Indoor Station

5.2 Indoor Station Wiring

5.2.1 Wiring of DS-KH8501-WT/DS-KH8500-T/DS-KH8301-WT/DS-KH8300-T

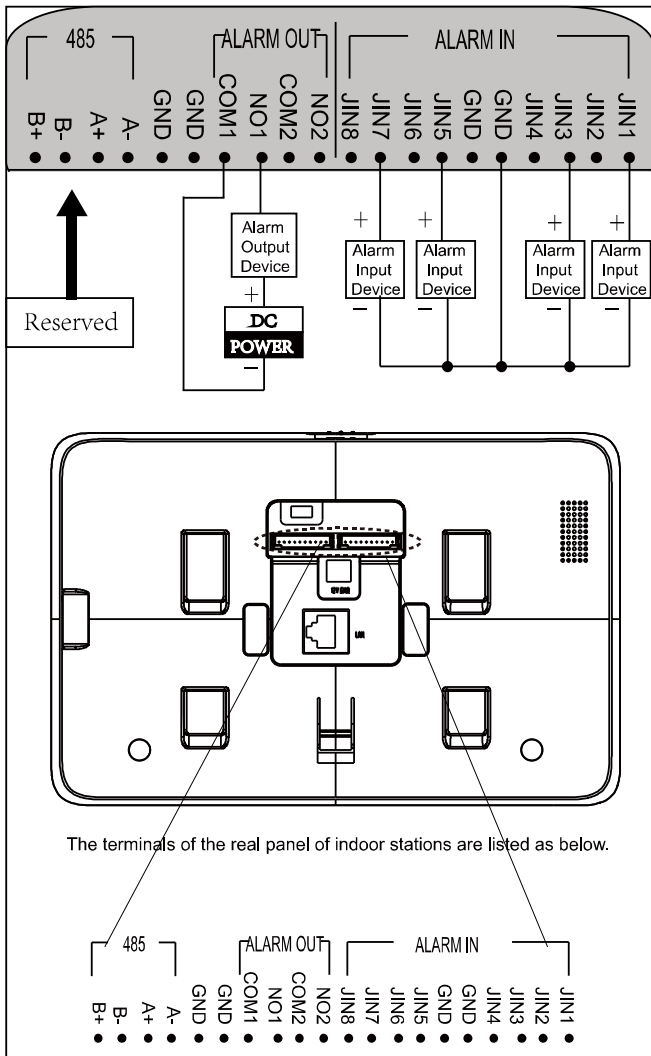


Figure 5-6 Wiring of DS-KH8301-WT/DS-KH8300-T Indoor Station

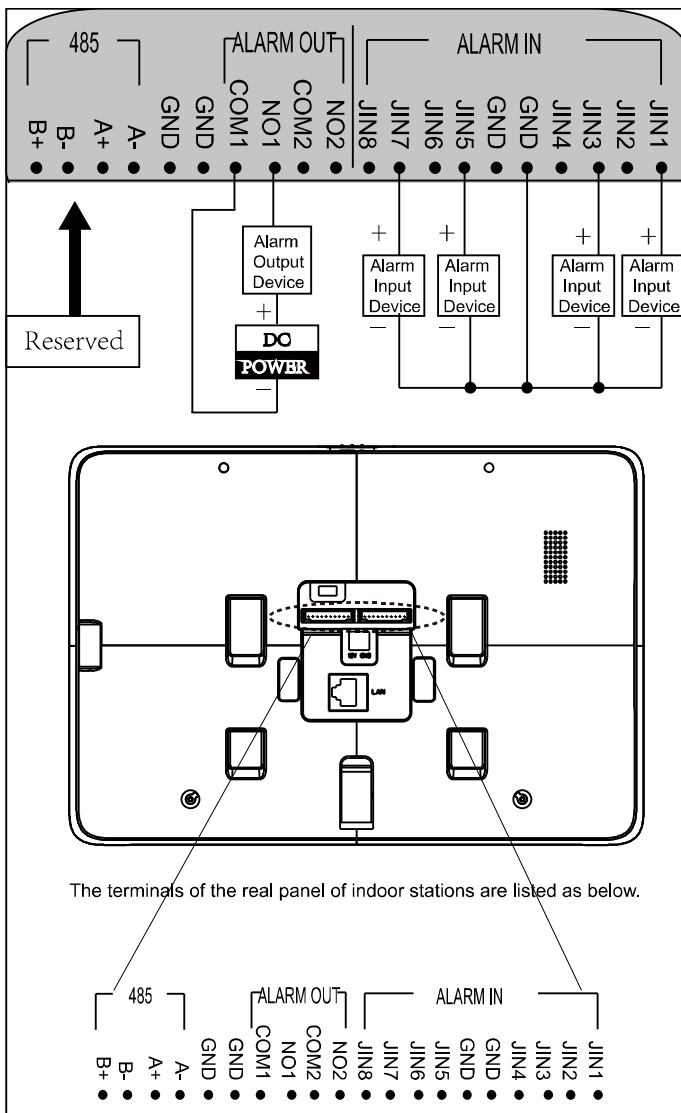


Figure 5-7 Wiring of DS-KH8501-WT/DS-KH8500-T Indoor Station

Table 5-1 Description of Indoor Station Interfaces

Interface	Description
ALARM IN	Connect alarm device, with one end of the device connecting to JINx and the other end connecting to GND (x indicates number between 1~8).
ALARM OUT	Connect alarm output devices.
GND 12V	Connect to DC power supply 12V.
LAN	Network port of indoor station. Connect the indoor station to the same LAN with the door station. (Support POE)

5.2.2 Wiring of DS-KH6310-W/DS-KH6310

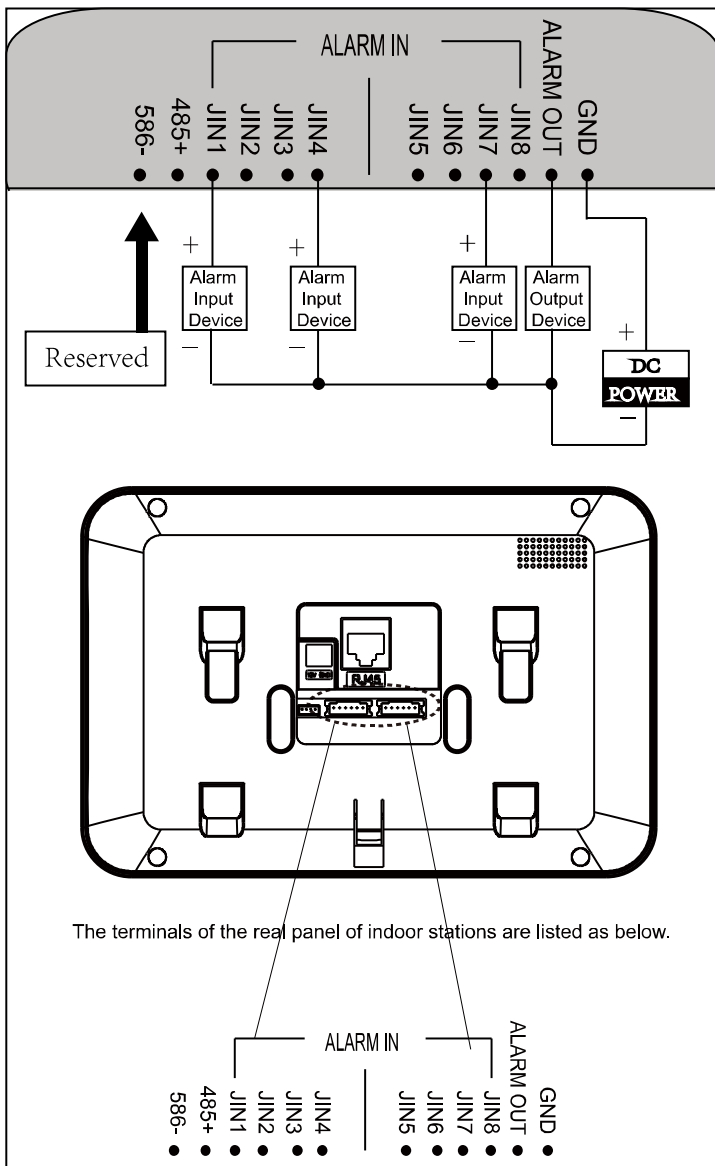


Figure 5-8 Wiring of DS-KH6310-W/DS-KH6310 Indoor Station

5.2.3 Wiring of DS-KH6310-W(L)/DS-KH6210(L)

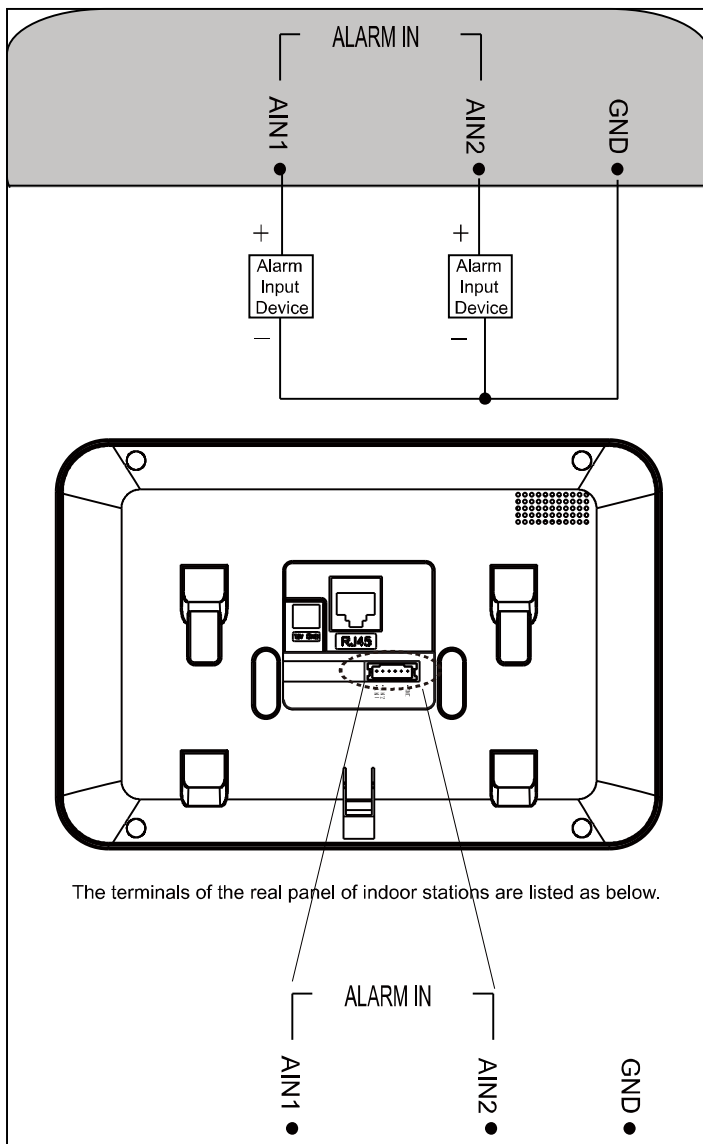


Figure 5-9 Wiring of DS-KH6310-W(L)/DS-KH6210(L) Indoor Station

6 Before You Start

For the first time use of the device, you are required to activate the device and set the device password. You can activate the device on the UI, via internet with Batch Configuration Tool, or with iVMS-4200 client software.



To activate the device on the UI, refer to chapter 10 and input the device password.

To activate the device with Video Intercom Device Set-up Tool, refer to chapter 7.

To activate the device with Batch Configuration Tool or iVMS-4200, refer to chapter 8.

To configure the key parameters of device on the user interface of indoor station, you are required to input the admin password.

- The default admin password is **888999**.
- The default unlocking password and arming/disarming password are **123456**;
- The default duress code is **654321**.

You must change these default credentials to protect against unauthorized access to the product. Please refer to 8.4.2 and 10.3.1 for changing passwords.

7 Video Intercom Device Set-up Tool

Purpose:

You can assign the device to the community, active and set the device by using the video intercom device set-up tool.

7.1 Setting a Community Structure

Purpose:

You can set a community structure, based on the real community situation, on the video intercom device set-up tool, and then assign devices to the community accordingly.



The concept Project, be self-defined in every individual application, is used to describe a collection of communities. A project can involve multi communities. While if there is only 1 community in a project, the default project No. is 1.

7.1.1 Setting Project

Steps:

1. Run the software to enter the main interface of video intercom device set-up tool.

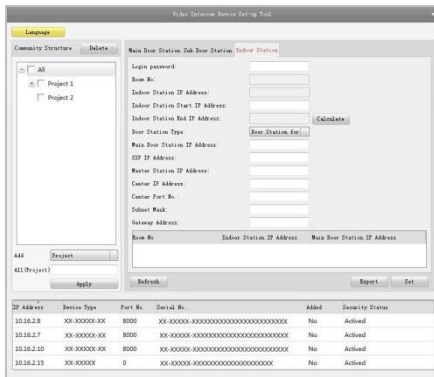


Figure 7-1 Main Interface of Device Set-up Tool

2. Select Project from the drop-down list and enter a number in the textbox to set the amount of project.



Figure 7-2 Project Settings

3. Click the **Apply** button to enable the settings.



The default amount of project is 1 if the amount is not set in the textbox.

7.1.2 Setting Community

Steps:

1. Check the checkbox of a certain project from the community structure.
2. Select Community from the drop-down list and enter a number in the textbox to set the amount of community.

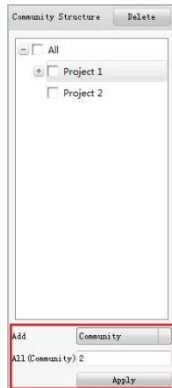


Figure 7-3 Community Settings

3. Click the **Apply** button to enable the settings.



If you check the checkbox of **All**, then all projects in the community structure will be selected, and will be added the same amount of community.

7.1.3 Setting Building

Steps:

1. Check the checkbox of a certain community from the community structure.
2. Select Building from the drop-down list and enter a number in the textbox to set the amount of building.

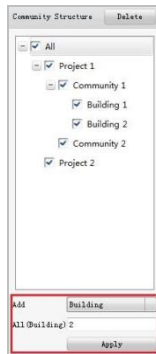


Figure 7-4 Building Settings

3. Click the **Apply** button to enable the settings.



- If you check the checkbox of **All**, then all communities in the community structure will be added the same amount of building.
- If you check the checkbox of a certain project, then all communities in the selected project will be added the same amount of building.

7.1.4 Setting Floor

Steps:

1. Check the checkbox of a certain building from the community structure.
2. Select Floor from the drop-down list and enter a number in the textbox to set the amount of floor.

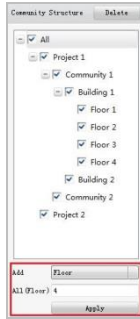


Figure 7-5 Floor Settings

3. Click the **Apply** button to enable the settings.



- If you check the checkbox of **All**, then all buildings in the community structure will be added the same amount of floor.
- If you check the checkbox of a certain project, then all buildings in the selected project will be added the same amount of floor.
- If you check the checkbox of a certain community, then all buildings in the selected community will be added the same amount of floor.

7.1.5 Setting Room

Steps:

1. Check the checkbox of a certain floor from the community structure.
2. Select Room from the drop-down list and enter a number in the textbox to set the amount of room



Figure 7-6 Room Settings

3. Click the **Apply** button to enable the settings.



- If you check the checkbox of All, then all floors in the community structure will be selected, and will be added the same amount of room.
- If you check the checkbox of a certain project, then all floors in the selected project will be added the same amount of floor.
- If you check the checkbox of a certain community, then all floors in the selected community will be added the same amount of floor.
- If you check the checkbox of a certain building, then all floors in the selected building will be added the same amount of floor.

7.2 Activating and Setting Indoor Station

Purpose:

You can activate the online indoor station, and configure the room number of online indoor station.

Steps:

1. Select the community to configure the room number for the indoor station.

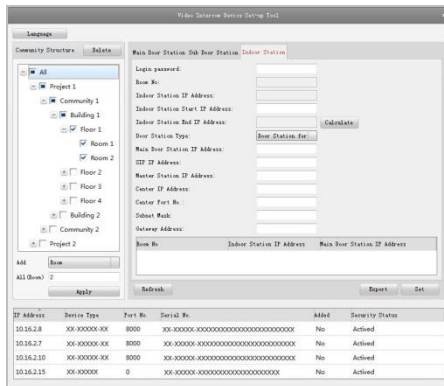


Figure 7-7 Selecting Community

2. Enter the indoor station start IP address.
3. Click the **Calculate** button to generate the indoor station end IP address automatically.
4. Enter the main door station IP address, SIP IP address, master station IP address, center IP address, center port No., subnet mask, and gateway address.
5. Click the **Refresh** button to view the online indoor station of the same segment.
6. Select an indoor station and enter the login password.

7. Click the **Set** button to accomplish the settings of indoor station.

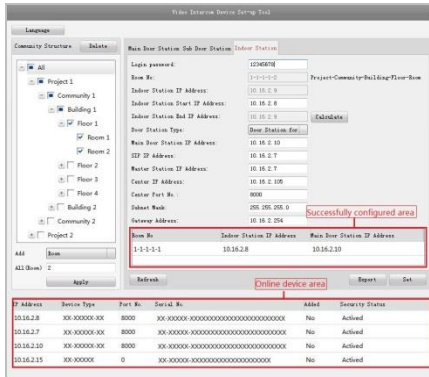


Figure 7-8 Indoor Station Settings Interface



- You can select one project or multiple projects; one community or multiple communities; one building or multiple buildings.
- The Indoor Station IP Address is usually set to be the same as Start IP Address of indoor station.
- Once the indoor station has been successfully configured, the indoor station information will be listed in the successfully-configured area, and the room number and the indoor station IP address will automatically switch to the next one. Thus, the next indoor station can be easily configured only by clicking the Set button.
- If the indoor station is not activated, create a login password and enter it in the textbox to activate the device.
- If the indoor station is not activated, the device is configured and activated simultaneously by clicking the Set button.
- The Indoor Station IP Address is usually set to be the same as Start IP Address of indoor station.
- When the device is successfully configured, it prompts the note: Configuring indoor station parameters succeeded.

8 Batch Configuration Tool

8.1 Activating Device Remotely

Purpose:

The device cannot be operated until it is activated. You can remotely activate the device via Batch Configuration Tool or via iVMS-4200 client. Here take the Batch Configuration Tool as example, and for further information, please refer to the user manual in the disk.

Steps:

1. Run the software, and select the inactivated device from the online devices and click the **Activate** button.

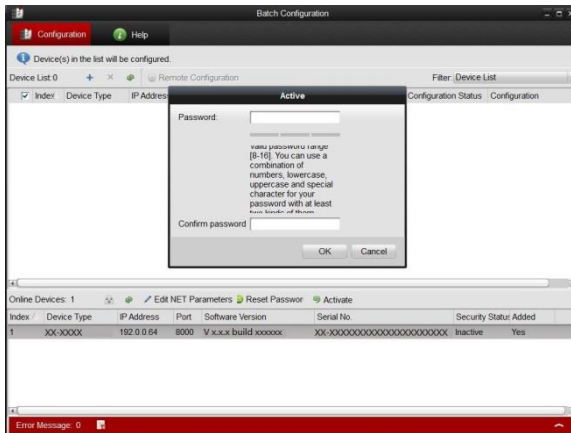


Figure 8-1 Activating Device

2. Create a password, and enter the password into the password field.



STRONG PASSWORD RECOMMENDED— We highly recommend you create a strong password of your own choosing (Using a minimum of 8 characters, including at least three of the following categories: upper case letters, lower case letters, numbers, and special characters.) in order to increase the security of your product. And we recommend you reset your password regularly, especially in the high security system, resetting the password monthly or weekly can better protect your product.

3. Confirm the password.
4. Click the **OK** button to activate the device.



When the device is not activated, the basic operation and remote operation of device cannot be performed.

8.2 Editing Network Parameters

Purpose:

You can edit the network parameters of online devices.

Steps:

1. Select an online device in the online devices list in the lower part of the batch configuration software interface.
2. Click the **Edit NET Parameters** button.



Figure 8-2 Edit NET Parameters

3. Enter a new IP address, subnet mask, gateway address, port No. and the password.
4. Click the **OK** button to accomplish the editing.

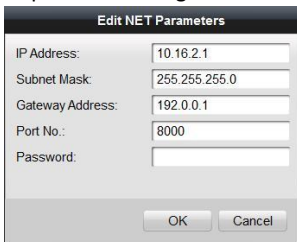


Figure 8-3 Edit Network Parameters



- The default port No. is 8000.
- After editing the network parameters of device, you should add the devices to the device list again.

8.3 Adding Device

The software provides 4 ways for adding the devices. You can add the active online devices within your subnet, add devices by IP address, add devices by IP segment or add devices by device port No. range.

8.3.1 Adding Online Devices

Steps:

1. Run the software to enter the main interface of video intercom batch configuration tool software.

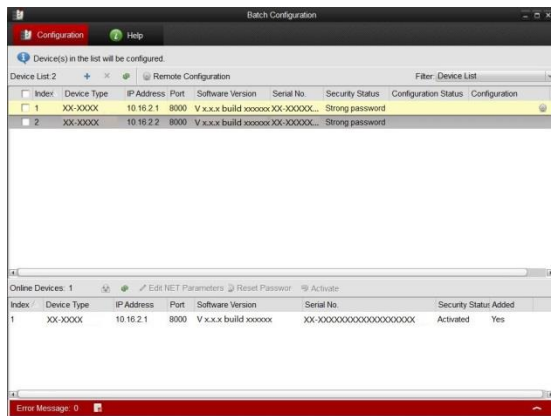


Figure 8-4 Main Interface of Batch Configuration Software

2. Select an online device or hold the Ctrl or Shift key to select multiple devices in the online devices list in the lower part of the batch configuration software interface.



Figure 8-5 Online Devices Interface


3. Click the  button to pop up the login dialog box.



Figure 8-6 Login Dialog Box

4. Enter the user name and password.
5. Click the **OK** button to save the settings.



Only the devices that are successfully logged in will be added to the device list for configuration.

8.3.2 Adding by IP Address, IP Segment or Port No.


Click the  button to pop up the adding devices dialog box.



Figure 8-7 Adding Button

● Adding by IP Address

Purpose:

You can add the device by entering IP address.

Steps:

1. Select IP Address in the adding mode drop-down list.
2. Enter the IP address, and set the port No., user name and password of the device.



Figure 8-8 Adding by IP Address

3. Click the **OK** button to add the device to the device list.

● **Adding by IP Segment**

Purpose:

You can add many devices at once whose IP addresses are among the IP segment.

Steps:

1. Select IP Segment in the adding mode drop-down list.
2. Set the Start IP Address and End IP Address.
3. Enter port No., user name, and password.

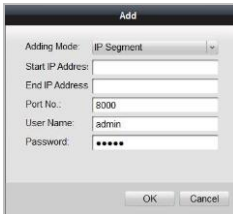


Figure 8-9 Adding by IP Segment

4. Click the **OK** button to search and add the devices whose IP addresses are within the range of the defined IP segment to the device list.

● **Adding by Port No.**

Purpose:

By adding devices by port No., you can add multiple devices which access to the network via port mapping. Devices, with the same IP address but different port numbers, can be added in this way.

Steps:

1. Select Port No. in the adding mode drop-down list.
2. Enter the IP address.
3. Set the Start Port No. and the End Port No..
4. Enter the user name and password.



Figure 8-10 Adding by Port No.

5. Click the **OK** button to search and add the devices of which port numbers are within the defined port No. range to the device list.



- You cannot add the device(s) to the device list if the user name and password are not identical.
- When you add devices by IP Address, IP Segment or Port No., the devices should be online devices.

8.4 Remote Configuration

In the device list area, select a device and click Remote Configuration or to enter the remote configuration interface.

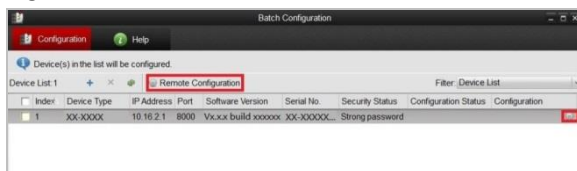


Figure 8-11 Remote Configuration

8.4.1 System

Click the **System** button on the remote configuration interface to display the device information: **Device Information, General, Time, System Maintenance, User, and RS485.**

Device Information

Click the **Device Information** button to enter device basic information interface. You can view basic information (the device type, and serial No.), and version information of the device.



Figure 8-12 Device Information Interface

General

Click the **General** button to enter device general parameters settings interface. You can view and edit the device name and device ID.

The screenshot shows a web interface titled "Configure general parameters of device." with a sub-section "General". It contains two input fields: "Device Name" with the value "Embedded Net VIS" and "Device ID" with the value "255". Below these fields is an "Apply" button.

Figure 8-13 Device General Parameters Settings Interface

Time

Steps:

1. Click the **Time** button to enter the device time settings interface.

The screenshot shows a web interface titled "Time, e.g. NTP" with a sub-section "Time Zone". It includes a dropdown menu for "Time Zone" set to "(GMT+08:00) Beijing, Urumqi, Singapore". Below this is an unchecked checkbox for "Enable NTP". There are three input fields: "Server Address" (0.0.0.0), "NTP Port No." (123), and "Sync Interval" (60) with the unit "Minute(s)". At the bottom, there is a "Synchronization" button and an "Apply" button.

Figure 8-14 Time Settings Interface

2. Select Time Zone or Enable NTP

- **Time Zone**

- 1) Select a time zone from the drop-down list menu.
- 2) Click the **Synchronization** button.

- **NTP**

- 1) Check the checkbox of **Enable NTP** to enable NTP.
- 2) Enter the server address, NTP port, and synchronization interval.

3. Click the **Apply** button to save and realize the time settings.



The default port No. is 123.

System Maintenance

Purpose:

You can operate the system management and remote upgrading on the system maintenance interface.

Steps:

1. Click the **System Maintenance** button to enter the system maintenance interface.
2. Select **System Management** or **Remote Upgrade**.

- **System Management**

- **Reboot**

- 1) Click the **Reboot** button to pop up the reboot dialog box.

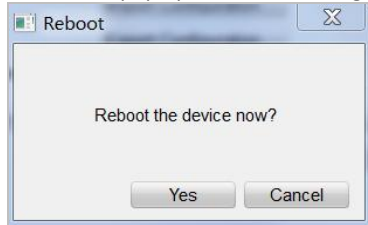


Figure 8-15 Reboot

- 2) Click the **Yes** button to reboot the system.

- **Restore Default Settings**

- 1) Click the **Restore Default Settings** button to pop up the restore default settings dialog box.



Figure 8-16 Restore Default Settings

- 2) Click the **Yes** button to restore the default parameters.

- **Restore All**

- 1) Click the **Restore All** button to pop up the restore all settings dialog box.

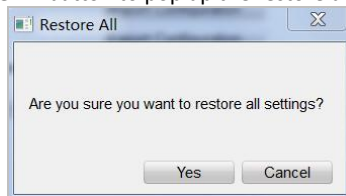


Figure 8-17 Restore All Settings

- 2) Click the **Yes** button to restore all parameters of device and reset the device to inactive status.
- **Import Configuration File**
- 1) Click the **Import Configuration File** button to pop up the import file window.

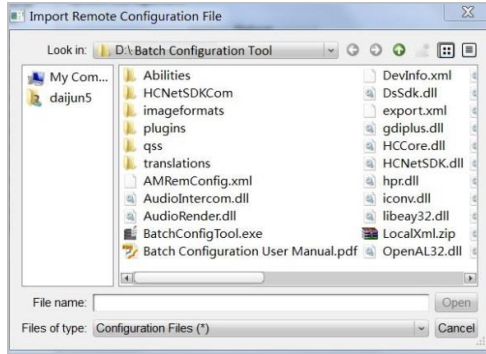


Figure 8-18 Import Configuration File Window

- 2) Select the path of remote configuration files.
- 3) Click the **Open** button to import the remote configuration file and pop up a reboot information dialogue box.

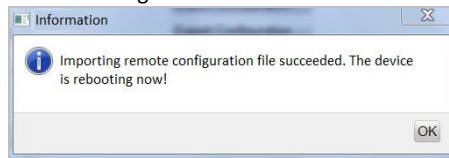


Figure 8-19 Reboot Information

- **Export Configuration File**
- 1) Click the **Export Configuration File** button to pop up the export file window.

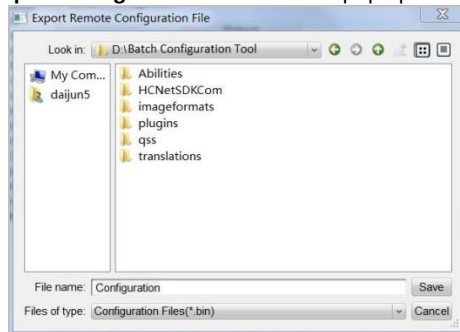


Figure 8-20 Export Configuration File Window

- 2) Select the save path of remote configuration files.
- 3) Click the **Save** button to export the configuration file, and pop up an information box for exporting.

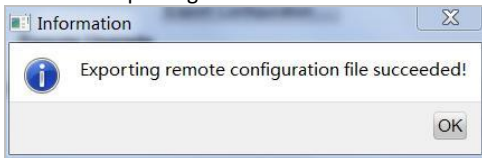



Figure 8-21 Information Box for Exporting

- **Remote Upgrade**
- **Reboot**

- 1) Click the  button to pop up the window for opening upgrade file.

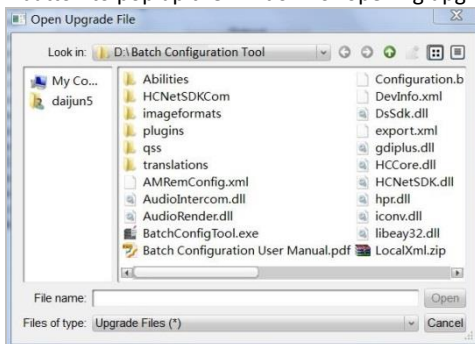


Figure 8-22 Window for Opening Upgrade File

- 2) Select the upgrade file, and click the Open button.
- 3) Click the Upgrade button to remotely upgrade the device.



Figure 8-23 Remote Upgrade

User

Purpose:

You can edit the password to log in the device.

Steps:

1. Click the **User** button to enter the user information editing interface

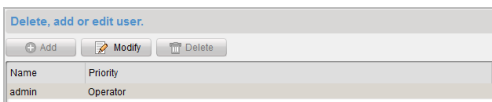


Figure 8-24 User Information Editing Interface

2. Select the user to edit and click the Modify button to enter the user parameter interface.

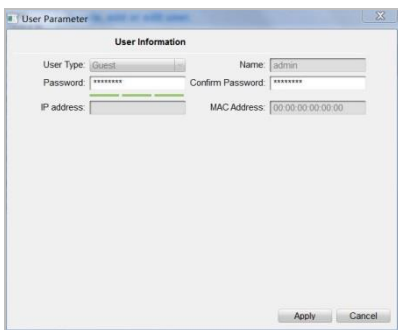



Figure 8-25 User Parameter Interface

3. Enter the new password, and confirm it.
4. Click the **Apply** button to realize the editing of password.



- The new password and confirm password should be identical.
- After editing the password of device, click  button from the device list, the added device will not be there. You should add the device again with new password to operate the remote configuration.

RS485

Click the **RS485** button to enter the RS485 settings interface. You can view and edit the RS485 parameters of the device.

Figure 8-26 RS485 Parameters



The DS-KH6210(L) and DS-KH6310-W(L) indoor stations do not support RS485 settings.

8.4.2 Video Intercom

Click the **Video Intercom** button on the remote configuration interface to enter the video intercom parameters settings: **Device Number Configuration, Time Parameters, Password, Zone Configuration, IP Camera Information, and Volume Input and Output Configuration.**



Indoor Extension does not support **IP Camera Information** settings.

Device Number Configuration

Steps:

1. Click the **Device Information** button to enter device number configuration interface.

Figure 8-27 Device Number Configuration Interface (Indoor Station)

Figure 8-28 Device Number Configuration Interface (Indoor Extension)

2. Select the device type: **Indoor Station** or **Station Extension**.
Indoor Station: Enter the Room No..
Station Extension: Enter the serial No..
3. Select **Yes** or **No** from the drop-down list menu of auto login.
4. Click the **Apply** button to enable the device number configuration.

Time Parameters

1. Click the **Time Parameters** button to enter time parameters settings interface.

Figure 8-29 Time Parameters Settings Interface (Indoor Station)

Figure 8-30 Time Parameters Settings Interface (Indoor Extension)

Indoor Station: Set the maximum ring duration, the maximum live view time, and call forwarding time.

Indoor Extension: Set the maximum live view time.

2. Click the **Apply** button to enable the time parameters settings.



- For indoor extension, only maximum live view time need to be configured.

- For indoor station, maximum ring duration is the maximum duration of indoor station when it is called without being received. The range of maximum ring duration varies from 30s~60s.
- For indoor station, maximum live view time is the maximum time of playing live view of the indoor station. The range of maximum live view time varies from 10s~60s.
- For indoor station, call forwarding time varies from 0s ~ 20s.

Password

1. Click the **Password** button to enter password changing interface.

Figure 8-31 Password Changing Interface

2. Select the admin password, arm/disarm password, unlocking password, or duress code from the drop-down list menu.
3. Enter the old password.
4. Set a new password.
5. Confirm the new password.
6. Click the **Apply** button to enable the password changing settings.



For indoor extension, only admin password and arm/disarm password need to be configured.

Zone

1. Click the **Zone** button to enter zone settings interface.

Figure 8-32 Zone Settings Interface

2. Select a zone type from the drop-down list menu.
3. Select an alarm mode from the drop-down list menu.
4. Set the zone status: NO or NC.
5. Set the enter delay.
6. Set the exit delay.
7. Click the **Apply** button to enable zone settings.



- Six zone types are supported: Emergency Switch, Door Magnetic Switch, Smoke Detector, Active IR Detector, Passive IR Detector, and Combustible Gas Detector.
- Three types of alarm mode are supported: Instant Alarm, 24H Alarm, and Delay Alarm.
- When the zone type is set to be Instant Alarm, only under arming mode, the indoor station will receive alarm message when the detector is triggered. Under disarming mode, it will not receive alarm message when the detector is triggered.
- When the zone type is set to be 24H Alarm, the indoor station will receive alarm message when the detector is triggered no matter it is under arming mode or disarming mode.
- When the zone type is set to be Delay Alarm, only under arming mode, the indoor station will receive alarm message when the detector is triggered. Under disarming mode, it will not receive alarm message when the detector is triggered.
- After setting enter delay time, if the OK button is pressed within the enter delay time after the alarm, the alarm event will not be uploaded to the management center; if the OK button is not pressed within the enter delay time after the alarm, the alarm event will be uploaded to the management center.
- The exit delay is the time between you enable the arming mode and the arming takes effect.
- The DS-KH6201(L) and DS-KH6310-W(L) only support 2 zones.

IP Camera Information

Purpose:

You can add, delete and modify network IP cameras with two ways of getting stream: direct or URL. You can also import and export the IP camera information.



- Indoor extension does not support the **IP Camera Information** settings.
- The DS-KH6210(L) does not support the **IP Camera Information** settings.

Steps:

1. Click the **IP Camera Information** button to enter IP camera information interface.

Adding Network IP Camera

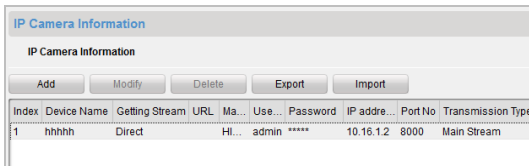


Figure 8-33 IP Camera Information Interface

- 1) Click the **Add** button on the IP camera information interface to pop up the adding IP camera dialog box.
- 2) Select Network IP Camera from the drop-down list menu of the device type.
- 3) Select Direct from the drop-down list menu of getting stream.

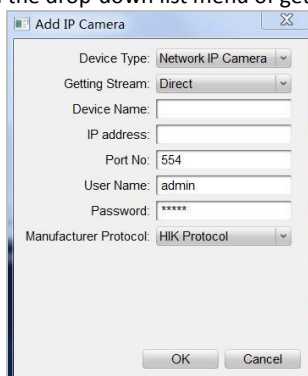


Figure 8-34 IP Camera Adding by Direct Stream

- Set a device name.
 - Enter the IP address, port No., user name, and password.
- 4) Select URL from the drop-down list menu of getting stream.

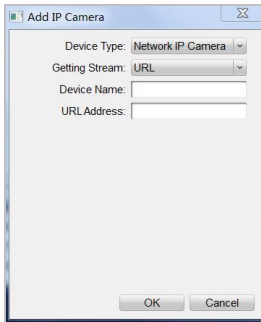


Figure 8-35 IP Camera Adding by URL

- Set a device name.
 - Enter the URL address.
2. Click the **OK** button.

8.4.3 Network

Click the **Network** button on the remote configuration interface to set network configurations: **Local Network Configuration**, and **Linked Network Configuration**.

Local Network Configuration

Steps:

1. Click the **Local Network Configuration** button to enter local network configuration interface.

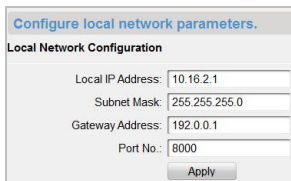


Figure 8-36 Local Network Configuration Interface

2. Enter the local IP address, subnet mask, gateway address, and port No..
3. Click the **Apply** button to enable the settings.



- The default Port No. is 8000.

- After editing the local network parameters of device, you should add the devices to the device list again.

Linked Devices Network Configuration

Purpose:

In the linked devices network configuration interface, you can configure the network parameters of master stations, SIP servers and management centers of the same LAN. The devices can be linked to the door station and realize the linkage between these devices.

Steps:

1. Click the **Linked Network Configuration** button to enter linked network configuration interface.

Figure 8-37 Linked Devices Network Configuration Interface (Indoor Station)

Figure 8-38 Linked Devices Network Configuration Interface (Indoor Extension)

2. Select the main door station type from the drop-down list: **Indoor Station** or **Indoor Extension**.

Indoor Station: Enter the master station IP address, (main) door station IP address, SIP server IP address, management center IP address, and doorphone IP address.

Indoor Extension: Enter the IP address of main indoor station.

3. Select the connection mode from the drop-down list menu: **Same LAN**, or **Different LANs**.
4. Click the **Apply** button to enable the settings.



- For indoor station, the linkage between indoor station and master station can be realized after adding master station IP Address,
- For indoor station, the video intercom among indoor stations of same building can be realized after adding the door station IP Address,
- For indoor station, after adding SIP Server Address IP, the video intercom of same community: video intercom between indoor stations of different building, calling indoor station from outer door station and video intercom between management center and indoors.
- For indoor station, alarm messages can be automatically uploaded to the management center after adding the security control panel.
- For indoor station, after adding the main indoor station, it can view the live view of door station or IP camera added by the main indoor station, and the communication between the main door station and indoor extension can be realized.

9 Setting the Door Station via iVMS-4200

9.1 System Configuration

After running the iVMS-4200, enter **Control Panel -> Maintenance and Management -> System Configuration -> Video Intercom** to configure the video intercom parameters accordingly.

You can configure the ringtone, Max. ring duration, Max. speaking time with indoor station and Max. speaking time with door station.

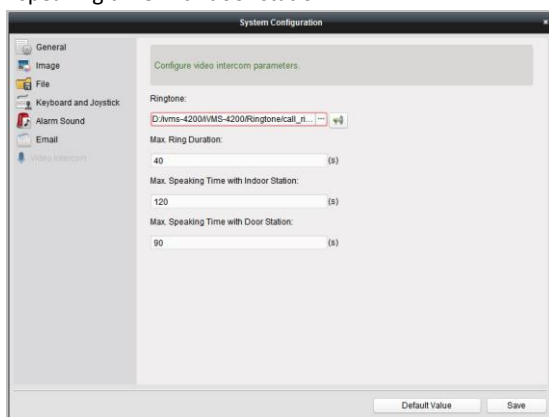


Figure 9-1 System Configuration Interface

9.2 Device Management

Device management includes activating device, adding device, editing device, deleting device and remote configuration. Please refer to Chapter 8 Batch Configuration Tool.



You can add at most 512 indoor stations and master stations in total to the iVMS-4200 client software.

9.3 Group Management

Purpose:

You can add groups to community, outer door station, or other, and assign devices to each group.



Indoor extension does not support the **Group Management** settings.

9.3.1 Adding Group

1. Click the **Group Management** tab to enter the group management interface.

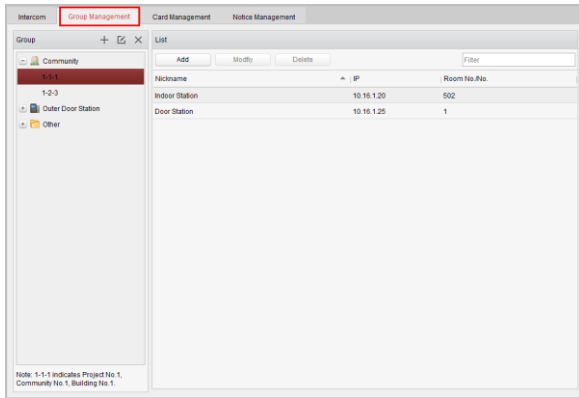


Figure 9-2 Group Management Interface

2. Click the **+** button on the right group list to pop-up group adding dialog box.

3. Select a kind of group type.

●Selecting Building as Group Type

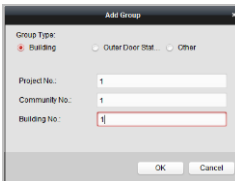


Figure 9-3 Group Adding Interface (Building)

1) Check the checkbox of building.

2) Enter the project No., community No., and building No..

●Selecting Outer Door Station as Group Type

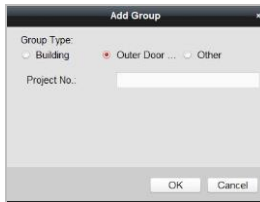


Figure 9-4 Group Adding Interface (Outer Door Station)

- 1) Check the checkbox of outer door station.
- 2) Enter the project No..

● **Selecting Other as Group Type**

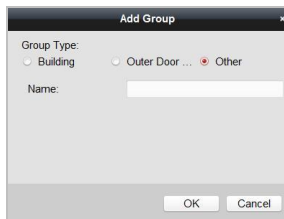


Figure 9-5 Group Adding Interface (Other)

- 1) Check the checkbox of other.
 - 2) Enter the name.
4. Click the **OK** button to complete the group adding settings.



- Groups that have been successfully added will be automatically listed in the group list according to different group types.
- You can add group to Other Group and set different groups to assign cards to staff other than residents, such as administrator, security guard and cleaning staff, etc.,. So you can assign corresponding cards and configure their different permissions.

9.3.2 Assigning Devices to Group

1. Click the **Add** button on the right to enter resident adding interface for adding devices to the list.

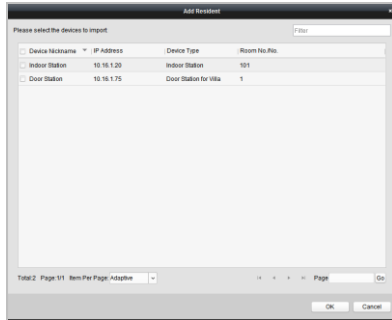


Figure 9-6 Resident Adding Interface

2. Check the checkbox of device and enter the Room No. of indoor stations to assign the device to the community.
3. Click the **OK** button to save the settings.

9.3.3 Modifying Device Information

1. Select an added device.
2. Click the **Modify** button to enter the device modifying interface.

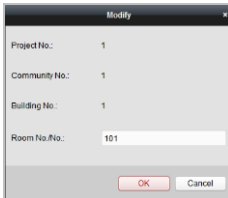


Figure 9-7 Device Modifying Interface

3. Click the **OK** button to complete the device modifying operation.

9.3.4 Deleting Device

1. Select an added device.
2. Click the **Delete** button to pop up a dialog box.

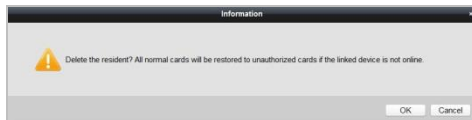


Figure 9-8 Group Deleting Interface

3. Click the **OK** button to complete the group deleting operation.

9.4 Card Management

Purpose:

You can add unauthorized cards to the community and then you can assign the cards to the corresponding indoor station and outdoor stations. For example, if there are 3 residents living in Room 401, you can assign 3 cards to No. 401 indoor Station. For each indoor station, you can assign many cards, and you can assign these cards to the door station from same building.



Indoor extension does not support the **Card Management** settings.

Steps:

1. Click the **Video Intercom** button on the control panel to enter the video intercom interface.
2. Press the **Card Management** tab to enter the card management interface.

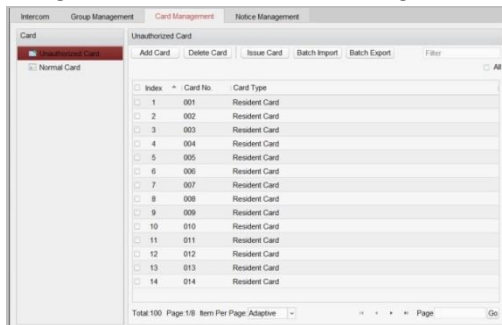


Figure 9-9 Card Management Interface

9.4.1 Unauthorized Card Management

Adding Card

1. Click the **Add Card** button to pop up card adding dialog box.
2. Select card adding mode: In Batch, By Single, Card Reader.
3. Select card type: Resident Card, Other Card.
4. Enter Start Card No. and End Card No. (adding in batch), or enter card No. (adding by single or card reader).

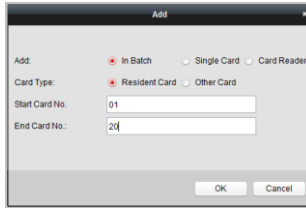


Figure 9-1 Adding in Batch



Figure 9-2 Adding by Single or Card Reader

5. Click the **OK** button to save the settings.



Two card types are recommended. Resident card is used by residents living in the community, and other card is used by visitors (guest, serviceman, etc.) in the community.

Issuing Card

1. Click the **Issue Card** button to pop up card issuing dialog box.

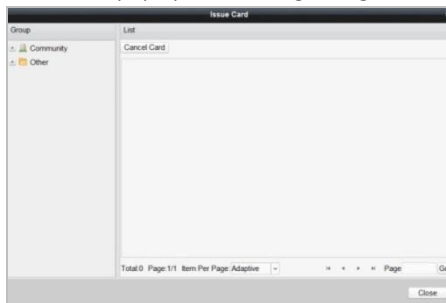


Figure 9-3 Card Issuing Interface

2. Issue Resident Card or Other Card.

- **Issuing Resident Card**

- 1) Select **Community** on the left and the indoor stations of the community will be listed in the resident list.

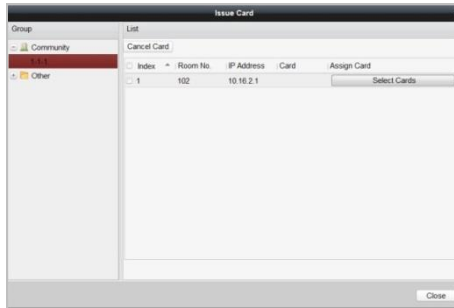



Figure 9-4 Resident Card Issuing Interface

- 2) Click the  button to pop up card selection interface for selecting unauthorized cards to be issued to the indoor station.

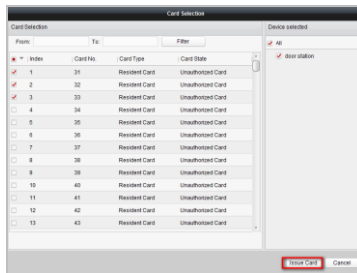


Figure 9-5 Resident Card Selection Interface

- 3) Check the checkboxes of the cards that need issuing to the indoor station, and check the checkbox of door stations, doorphones and outer door stations (only resident cards can be assigned to indoor stations).
- 4) Click the **Issue Card** button to complete the resident card issuing settings.



Multiply resident card can be issued to an indoor station.

- **Issuing Other Card**

- 1) Select **Other** on the left group list and the name for other card issuing will be listed in the right list.

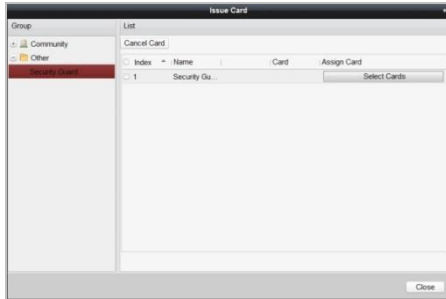


Figure 9-6 Other Card Issuing Interface

- 2) Click the Select Cards button to pop up card selection interface for selecting unauthorized cards to be issued to the indoor station.

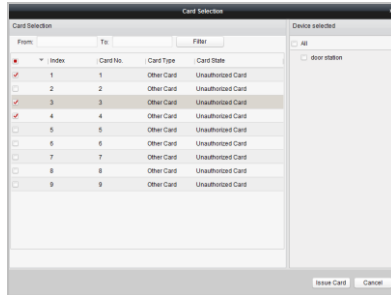


Figure 9-7 Other Card Selection Interface

- 3) Check the checkboxes of the cards that need issuing to the indoor station, and check the checkbox of door stations, doorphones and outer door stations (only resident cards can be assigned to indoor stations).
- 4) Click the **Issue Card** button to complete the other card issuing settings.



Multiply other cards can be issued to a same group.

Deleting Card

●Deleting Unauthorized Card

- 1) On the card management interface, check the checkbox(ex) of unauthorized card(s).

- 2) Click the **Delete Card** button to pop up unauthorized card deleting box.

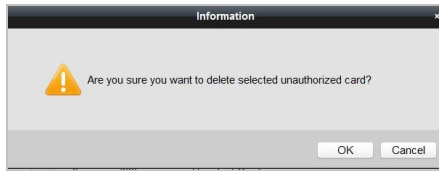



Figure 9-8 Card Deleting Information Box

- 3) Click the **OK** button to delete the card(s).

●Deleting Issued Card

- 1) On the resident/other card issuing interface, select a community group or an Other group.
- 2) Click the  button to enter the card selection interface for deleting issued card.
- 3) Cancel the checkbox(ex) of issued card(s) and check the checkbox door stations, doorphones or outer door stations.
- 4) Click the **Issue Card** button to complete the issued card deleting settings.



- You can cancel issued card(s) from single or certain door stations by cancelling the checkbox(es) from the device list.
- To cancel all issued cards, check the checkbox(es) of Room No. / name, and click the Cancel Card button to cancel all cards issued to the device. The card state will be reset to unauthorized card.

Importing Unauthorized Cards in Batch

1. Click the **Batch Import** button to pop up card batch importing dialog box.

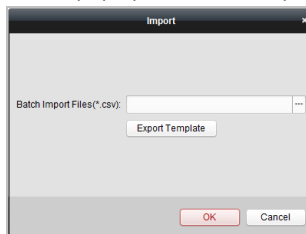


Figure 9-9 Bath Import Interface

2. Click the **Export Template** button to export the template of the batch import file.

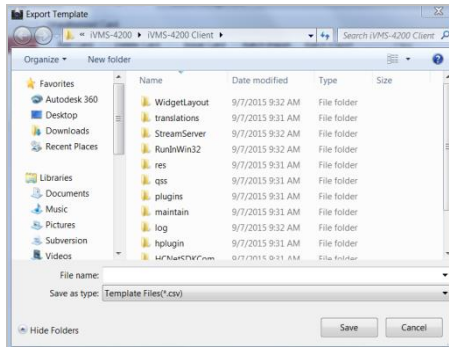


Figure 9-10 Template File Exporting Interface

3. Fill in the template of the batch import file and click the **Save** button to save it.
4. Click the button to select the batch import file.

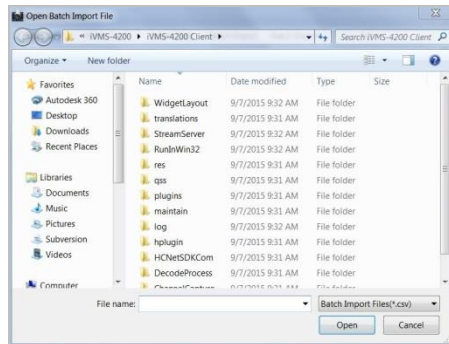


Figure 9-11 Batch Import File Opening Interface

5. Click the **Open** button.
6. Click the **OK** button to start importing the batch import file.

Export Unauthorized Cards in Batch

1. Click the **Batch Export** button after adding unauthorized cards.

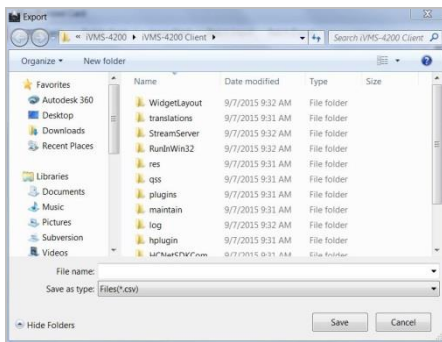


Figure 9-12 Batch Export Interface

2. Select the saving file path and click the **Save** button.
3. Generate an excel file in the saving directory after exporting unauthorized cards in batch.

9.4.2 Normal Card Management

On card management interface, click the **normal card** button to enter the normal card interface for listing normal cards including resident card and other card. After issuing cards, the issued cards will be listed in the normal card list, as shown in the figure below.

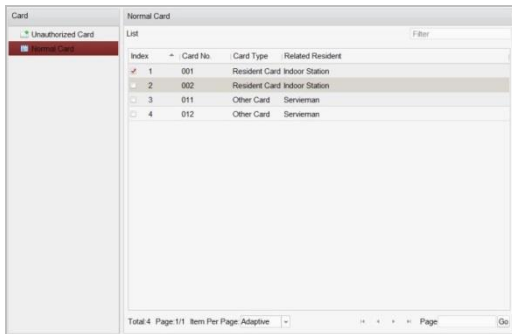


Figure 9-13 Normal Card Interface



- To issue cards with card issuer, please connect the card reader DS-K1F100-D8 (purchased separately) to PC via USB interface. Open iVMS-4200 and enter the directory of Video Intercom->Card Management->Unauthorized Card->Add Card. Swipe the unauthorized card in turn and the card No. will be read and added to the device automatically.

- After issuing each card via iVMS-4200, the device plays the voice prompt: Issuing card finished.

9.5 Notice Management



Indoor extension does not support the **Notice Management** settings.

9.5.1 Creating Notice Information

Purpose:

You can create notice information and send it to residents.

Steps:

1. Click the **Create Notice Information** button to enter the create notice information interface.

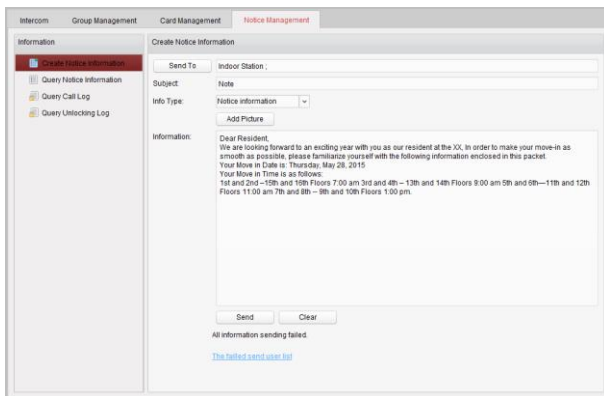


Figure 9-1 Create Notice Information

2. Click the **Send To** button to enter the resident select interface.

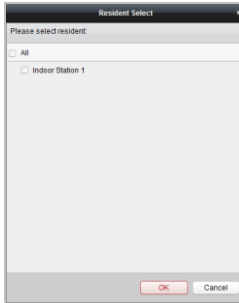


Figure 9-2 Resident Select

3. Select the resident to send the notice information, and click the **OK** button.
4. Input the subject, select the info type and add the picture (optional).
5. Input the information and click the **Send** button to send the notice.



- No more than 63 letters (including space) can be input in the field of subject.
- No more than 1023 letters (including space) can be input in the field of information.
- Only picture with size smaller than 512KB and with format of jpg. can be added to the notice, and no more than 6 pictures can be added to the same notice information.

9.5.2 Querying Notice Information

Purpose:

You can search the notice information send to residents.

Steps:

1. Select the **Query Notice Information** button to enter query notice information interface.
2. Select the info type, input the subject, recipient, and set the start time and end time.

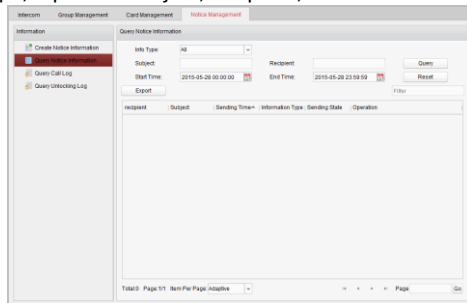


Figure 9-3 Query Notice Information

3. Click the **Query** button to search the notice information.
4. Click the **Details** button to view the detailed information of selected notice. You can resend the notice information failed to be received or unread by residents.

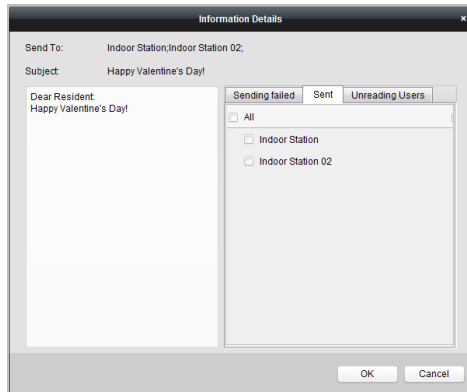


Figure 9-4 Information Details

5. Click the **Export** button to export the notice information.

9.5.3 Querying Call Logs

Steps:

1. Click the **Query Call Logs** button to enter query call logs interface.
2. Select the calling status, device type, and set the start time and end time.
3. Click the **Query** button to search the calling log.

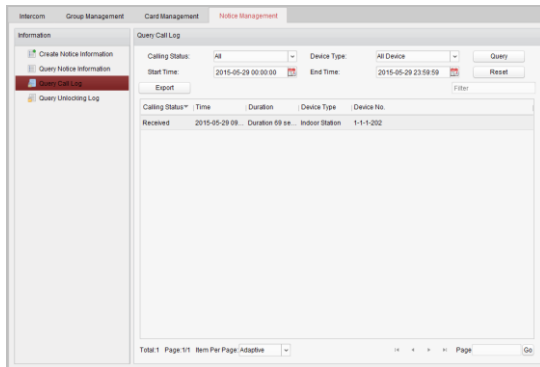


Figure 9-5 Query Call Logs

4. Click the **Export** button to export the calling logs.

9.5.4 Querying Unlocking Log

Steps:

1. Click the **Query Unlocking Logs** button to enter query unlocking logs interface.
2. Select the unlocking type, device type, and set the start time and end time.

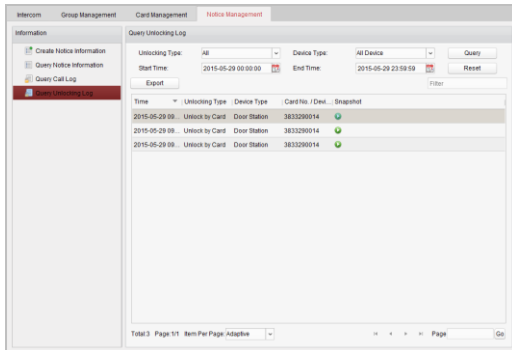


Figure 9-6 Query Unlocking Logs

3. Click the **Query** button to search the unlocking log.
4. Click the **Export** button to export the unlocking logs.

9.6 Device Arming Control

Steps:

1. Select **Tool->Device Arming Control** to enter the device arming control interface.



Figure 9-7 Tool Menu

2. Set the arming status of the device as armed, and the alarm information will be auto uploaded to the client software when alarm occurs.



Figure 9-8 Device Arming Control



Figure 9-9 Alarm Events



After adding the device to the client software, it will be armed automatically.

9 Local Operation



- Here the local operation of indoor stations with touch screen is taken as example.
- The DS-KH6201(L) should be operated with physical keys. The **SOS** key works as a return key; the **Unlock** key works as direction keys ▲ and ◀ to turn up and left; the **Live View** key works as direction keys ▼ and ▶ to turn down and right; and the **Management Center** key works as a confirm key.

10.1 Activating Device Locally

Steps:

1. Power on the indoor station to enter the activation interface.

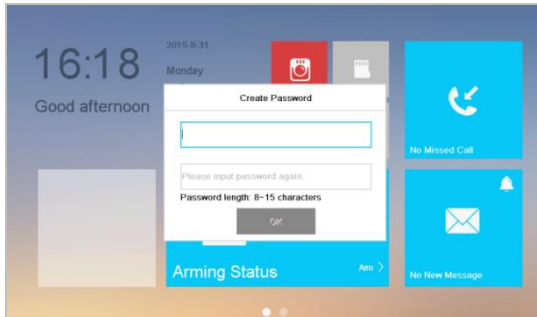


Figure 9-1 Activation Interface (DS-KH8301-WT/DS-KH8300-T)

2. Create a password and confirm it.
3. Press the **OK** tab to activate the device.

STRONG PASSWORD RECOMMENDED— We highly recommend you to create a strong password of your own choosing (using a minimum of 8 characters, including at least three kinds of following categories: upper case letters, lower case letters, numbers, and special characters) in order to increase the security of your product. And we recommend you reset your password regularly, especially in the high security system, resetting the password monthly or weekly can better protect your product.



- You must create a password to activate the indoor station for your first time usage and when it is not activated.
- Only after activating the indoor station, you can operation it locally and remotely.
- Here the activation interface of models DS-KH8301-WT/DS-KH8300-T indoor stations is taken as example.

10.2 User Interface Description

10.2.1 User Interface of Indoor Station

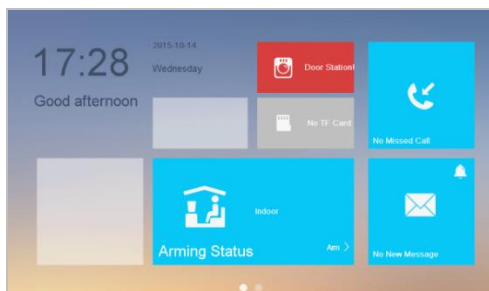


Figure 9-2 User Interface of Indoor Station (Page 1)

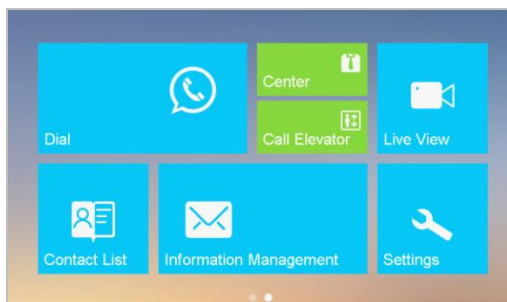


Figure 9-3 User Interface of Indoor Station (Page 2)



- Slide left and right to realize the switch between two interface pages (except for DS-KH6210(L)).
- Here the user interface of DS-KH8501-WT is taken as as example.

- Only DS-KH8501-WT/DS-KH8500-T/DS-KH8301-WT/DS-KH8300-T indoor stations support TF card.
- DS-KH6210(L) only has one interface page.

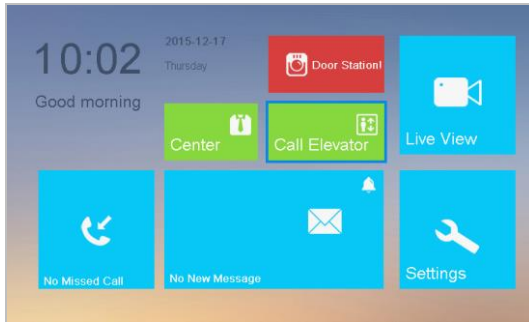


Figure 9-4 User Interface of DS-KH6210(L)

10.2.2 User Interface of Indoor Extension

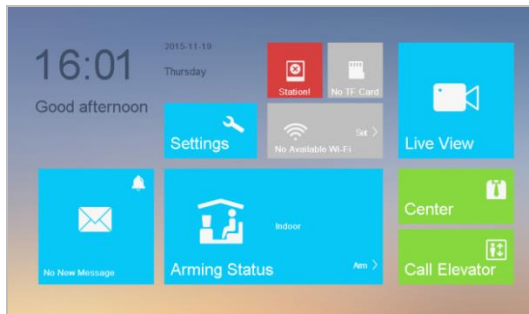








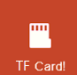
Figure 9-5 User Interface of Indoor Extension




- Only DS-KH8501-WT/DS-KH8500-T/ DS-KH8301-WT/DS-KH8300-T indoor extensions support TF card.
- Here the user interface of DS-KH8301-WT indoor extension is taken as example.

10.2.3 Indoor Station Status






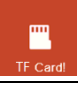

Table 10-1 Description of Status Icons

Icon	Definition	Description
	Normal Status.	The communication between indoor station, door station and master station is normal. And the communication between indoor station and indoor extension is normal.
	The indoor station is offline.	Please check the network cable or Wi-Fi connection.
	Exception occurs in the communication with door station.	Room No. conflict. Configure the Room No. again.
		Invalid Room No.. Configure the Room No..
		Invalid main door station IP address. Configure the main door station IP address.
		Network of door station is abnormal. Check the network connection of main door station.
	The indoor station has not registered in the SIP server.	Communication of door station is abnormal. Check if the door station IP address is correct.
		Invalid SIP server IP address. Set the SIP server IP address.
		Network of SIP server is not available. Check the SIP server network connection.
		SIP server communication is not available. Check if the SIP server IP address is correct.
	The indoor station IP address conflicts with that of other device.	SIP server rejected to login the device. Check if the device No. has been registered.
		Please check the IP address.
	TF card is inserted in the indoor station.	Only DS-KH8501-WT/DS-KH8500-T/DS-KH8301-WT/DS-KH8300-T Models support the TF card function.
	Exception occurs with the TF card.	

Icon	Definition	Description
	No TF card is inserted in the indoor station.	

10.2.4 Indoor Extension Status

Table 10-2 Description of Status Icons

Icon	Definition	Description
	Normal Status.	The communication between indoor station and indoor extension is normal.
	The indoor extension is offline.	Please check the network cable or Wi-Fi connection.
	The indoor extension IP address conflicts with that of other device.	Please check the IP address.
	The indoor extension has not connected to the indoor station.	Invalid indoor station IP address. Set the indoor station IP address.
		Network of indoor station is not available. Check the indoor station network connection.
		The indoor extension number conflicts with number of another indoor extension.
	TF card is inserted in the indoor station.	Only DS-KH8501-WT/DS-KH8500-T/DS-KH8301-WT/DS-KH8300-T Models support the TF card function.
	Exception occurs with the TF card.	
	No TF card is inserted in the indoor station.	

10.2.5 Arming Status

Purpose:

Arming status displays the arming situation of your room from 4 types: sleeping, custom, outdoor, and indoor. You can arm/disarm the room manually, and when the arming status is enabled, the arming status will display on the main interface.

Steps:

1. Press the **Arming Status** tab to display the arming status interface.
2. Press the arming mode (**Indoor**, **Sleeping**, **Outdoor**, or **Custom**) tab to pop up the arm/disarm password authentication dialogue box.
3. Enter the arm/disarm password to enable the arming status.

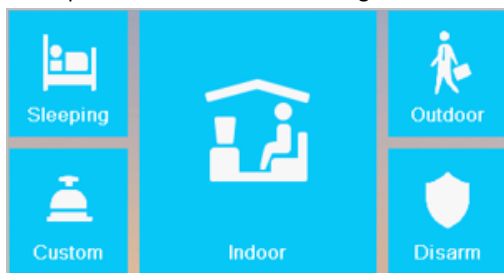


Figure 9-6 Arming Status Menu



- Only one mode of arming can be set at one time. When you set another mode of arming status, the former one is disarmed automatically.
- If enabling the arming status successfully, you can hear a voice prompt “armed”, and the corresponding arming status will display on the main interface.
- If you want to disarm, press the **Disarm** tab and enter the arm/disarm password to disable the arming status successfully with a voice prompt “disarmed”.
- The DS-KH6201(L) indoor station does not support this function.

10.3 Settings

Purpose:

On the settings interface, you can set passwords (admin password, duress code, unlock password, and arm/disarm password), set the device sound, set no disturbing schedule, set the arming mode and zone, perform the system maintenance, set the configuration settings, and view the device information.

10.3.1 Password Settings

Purpose:

- You can edit the admin password (configuration password), duress code, unlock password and arm/disarm password of the indoor station.
- You can edit the admin password (configuration password) and arm/disarm password of the indoor extension.
- Enter admin password when configuring key parameters.
- Enter duress code in the door station when the user is hijacked.
- Enter unlock password in the door station when opening door of the building.
- Enter arm/disarm password when arming/disarming the zone.

Steps:

1. Press the **Settings** tab on the touch screen to enter the password settings interface.

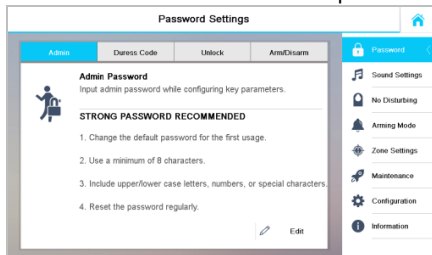


Figure 9-7 Password Settings Interface (Indoor Station)

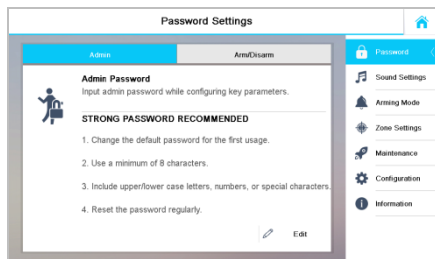



Figure 9-8 Password Settings Interface (Indoor Extension)

2. **Indoor Station:** Press the **Admin Password** tab, **Duress Code** tab, **Unlock Password** tab, or **Arm/Disarm Password** tab to enter corresponding interfaces.
- Indoor Extension:** Press the **Admin Password** tab or **Arm/Disarm Password** tab to enter corresponding interfaces.
3. Press the **Edit** tab to pop up the password changing dialogue box.



Figure 9-9 Password Changing Interface

4. Enter the old password to change it.
5. Enter the new password and confirm it.
6. Press the  tab to save the settings.



- The default admin password (configuration password) is **888999**;
- The default unlock password and arm/disarm password are **123456**;
- The default duress code is **654321**;

STRONG PASSWORD RECOMMENDED– *We highly recommend you to create a strong password of your own choosing (using a minimum of 8 characters, including at least three kinds of following categories: upper case letters, lower case letters, numbers, and special characters) in order to increase the security of your product. And we recommend you reset your password regularly, especially in the high security system, resetting the password monthly or weekly can better protect your product.*



10.3.2 Sound Settings

Purpose:

You can set the ringtone, ring duration, volume of microphone and loudspeaker, enable/disable touch sound and auto-answer function on sound settings interface.

Steps:

1. Press the **Settings** tab and then the **Sound Settings** tab to enter the sound settings interface.

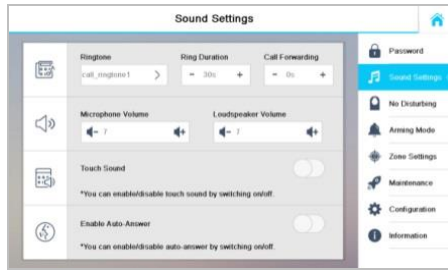




Figure 9-10 Sound Settings Interface (Indoor Station)

2. Select the ringtone for the device.
3. Set the ring duration, and call forwarding for the device.
4. Set the microphone volume, and loudspeaker volume.
5. Switch  to  to enable the touch sound and auto-answer function.



- Ring duration varies from 30s to 60s.
- Call forwarding varies from 0s to 20s.
- For indoor extension, it does not support the ring duration settings, call forwarding settings, or auto-answer function.

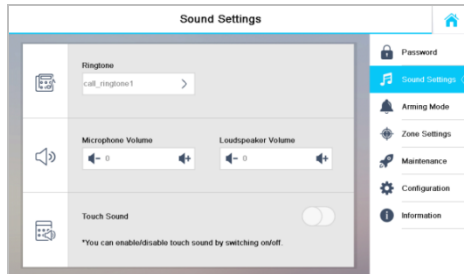


Figure 9-11 Sound Settings Interface (Indoor Extension)

10.3.3 No Disturbing Settings

Purpose:

Two types of no disturbing mode can be configured: **All day** and **Scheduled**.

Steps:

1. Press the **Settings** tab and then the **No Disturbing** tab to enter the no disturbing settings interface.

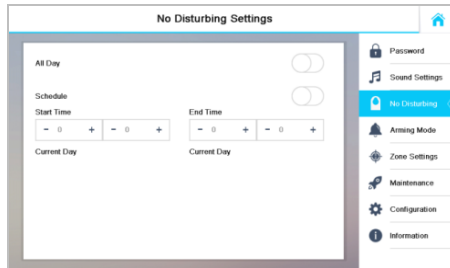


Figure 9-12 No Disturbing Settings Interface

2. Select no disturbing mode: **All Day** or **Scheduled**.

- **All Day:**

- 1) Switch to to enable no disturbing mode.

- **Scheduled:**

- 1) Switch to to enable no disturbing mode.
- 2) Set the start time and the end time.



- Under all-day no disturbing mode, the indoor station will not ring all day when it is called by door station or other indoor stations, but the call logs will be saved.
- Under scheduled no disturbing mode, the indoor station will not ring between the start time and the end time when it is called by door station or other indoor stations, but the call logs will be saved.
- Indoor extension does not support No Disturbing Settings.

10.3.4 Arming Mode Settings

Purpose:

Four arming modes can be configured: outdoor mode, indoor mode, sleeping mode and custom mode.

Steps:

1. Press the **Settings** tab and then the **Arming Mode** tab to enter the arming mode settings interface.

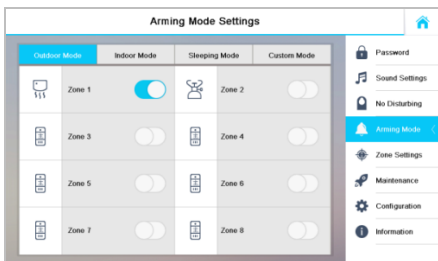




Figure 9-13 Arming Mode Settings Interface

2. Press **Outdoor Mode** tab, **Indoor Mode** tab, **Sleeping Mode** tab, and **Custom Mode** tab to enter corresponding arming mode settings interface.
3. Switch  to  to enable the arming in the selected zoon.



- Zones in each arming mode can be configured manually. See detailed information in 10.3.5.
- For 24H alarm zone and smoke detector zone, even if it is disabled under current arming mode, the indoor station will still alarm when it is triggered.
- Arm mode settings should be configured with the settings of arming status on the user interface of the device.
- The DS-KH6201(L) and DS-KH6310-W(L) indoor stations only support 2 zones.

10.3.5 Zone Settings

Purpose:

You can set the zone type, alarm type and delay time and other parameters of 8 zones.

Steps:

1. Press the **Settings** tab and then the **Zone Settings** tab to enter the zone settings interface.

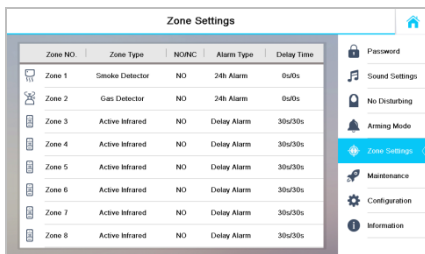


Figure 9-14 Zone Settings Interface

2. Press a zone to pop up the zone editing dialogue box.

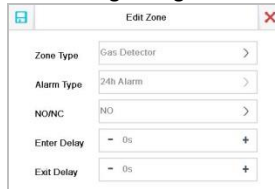



Figure 9-15 Zone Editing Interface

3. Select a zone type from the drop-down list menu.
4. Select an alarm type from the drop-down list menu.
5. Set the status of zone arming: **NO** or **NC**.
6. Set the enter delay time and exit delay time.
7. Press the  tab to save the settings.





- Both the enter delay time and the exit delay time are from 30s to 60s.
- 4 zone types are selectable: Smoke Detector, Active Infrared, Passive Infrared, Passive Infrared, and Gas Detector.
- Set the alarm type as 24h alarm, and the zone will be armed for 24h.
- Set the alarm type as instant alarm, and the zone will alarm once it's triggered.
- Set the alarm type as delay alarm, and you can set the enter delay duration and exit delay duration.
- For Gas Detector and Smoke Detector, the alarm type is set as default 24h alarm.
- The DS-KH6201(L) and DS-KH6310-W(L) indoor stations only support 2 zones.

10.3.6 System Maintenance

Purpose:

You can format TF card, clear the screen, view the version information of the indoor station and restore the system on the system maintenance interface.

Steps:

1. Press the **Settings** tab and then the **Maintenance** tab to enter the system settings interface.
2. Press the **Format** tab to format the TF card.
3. Switch  to  to enable the clear screen mode.
4. Press the **Reboot** tab to reboot the system.
5. Press the **Upgrade** tab to upgrade the system.

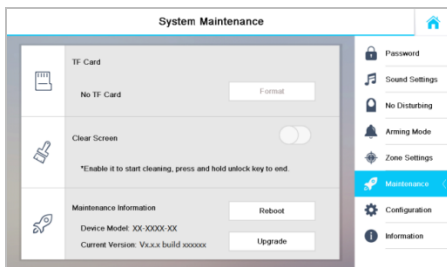



Figure 9-16 System Maintenance Interface



- Only DS-KH8500-T/DS-KH8501-WT/DS-KH8300-T/DS-KH8301-WT models indoor stations support TF card function.
- Only DS-KH8501-WT/DS-KH8301-WT/DS-KH6310-W/DS-KH6310-W(T) models indoor stations have the **Upgrade** tab on the system maintenance interface.
- After clearing the screen, you can press and hold  to exit clear screen mode.

10.3.7 Configuration Settings

Purpose:

On the configuration settings interface, you can set and view the local information, configure the network, manage devices, synchronize the device time, and restore the default settings.

Setting Local Information

Steps:

1. Press the **Settings** tab on the touch screen.
2. Press the **Configuration** tab and enter the admin password (configuration password).
3. Press the **Local Info** tab to enter the local information settings interface.
4. Select the indoor station type: **Indoor Station**, or **Indoor Extension**.

Indoor Station: Set the Room No.

Indoor Extension: Set the Extension No., and set a room name.

5. Press the drop-down list to select a video standard: **PAL**, or **NTSC**.
6. Set the maximum live view duration of the device.



- The Extension No. is numeric from 1 to 5, i.e., at most 5 indoor extensions can connect to one indoor station.
- Only DS-KH8301-WT and DS-KH8501-WT require setting the video standard, and the system will reboot after selecting video standard.

- The maximum live view duration varies from 10 seconds to 60 seconds.

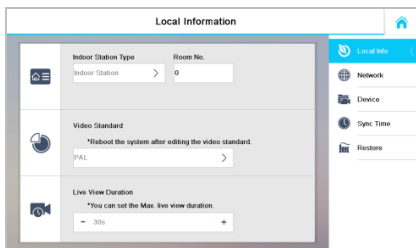


Figure 9-17 Local Information Settings (Indoor Station)

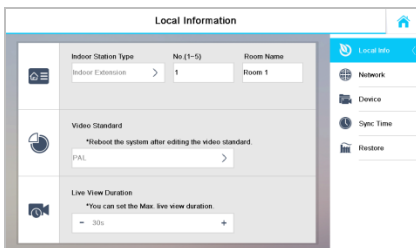



Figure 9-18 Local Information Settings (Indoor Extension)

Setting Network

Purpose:

Network connection is mandatory for the use of the indoor station.

Steps:

1. Press the **Settings** tab on the touch screen.
2. Press the **Configuration** tab and enter the admin password (configuration password).
3. Press the **Network** tab to enter the network settings interface.
4. Press the  tab to pop up network settings dialogue box.

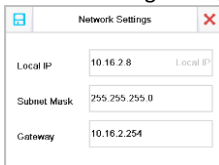



Figure 9-19 Setting Network

5. Enter a local IP address, subnet mask, and gateway.
6. Press the  tab to save the settings.




- Enable **DHCP** function to obtain an IP address automatically.
- Please enable **Same LAN** function if the indoor stations and indoor extensions are in the same local area network with other video intercom devices in a community, or the indoor extensions will not work normally.

Setting the SIP Server

Purpose:

To realize the connection between the indoor station and the management center (master station), the indoor station should connect to a SIP server in advance.

Steps:

1. Press the **Settings** tab on the touch screen.
2. Press the **Configuration** tab and enter the admin password (configuration password).
3. Press the **Device** tab to enter the device management interface.
 1. Press the **SIP Server** tab.
 2. Enter the IP address of the SIP server.
 3. Press the  tab to save the SIP server added.



- The master station can work as a SIP server.
- Indoor extension cannot connect to the SIP server.

Adding Devices (Indoor Station)

Purpose:

The indoor station never works alone. You can connect the main door station, IP camera, SIP server, SCP (Security Control Panel), DVR/DVS/NVR, and so on. Once connected, those devices can work together as a whole video intercom system.



- When there are added devices, press and hold the device to pop up the device operation menu for deleting the selected device or clearing all devices (excluding the security control panel, SIP server, main door station, and doorphone), viewing, and editing parameters of the selected device.
- SIP server, SCP (Security Control Panel), main door station, and doorphone can only be edited but not deleted.
- The IP camera added via URL with configuring tool software cannot be edited, and it can only be deleted or cleared in the indoor station. The IP Camera added directly with configuring tool software can be edited, deleted and cleared in the door station.

- The DS-KH6201(L) indoor station does not support adding IP camera, DVR/DVS/NVR, or doorphone.


- **Connecting Main Door Station**

Steps:

1. Press the **Settings** tab on the touch screen.
2. Press the **Configuration** tab and enter the admin password (configuration password).
3. Press the **Device** tab to enter the device management interface.
4. Press the **Main Door Station** tab to pop up the device information dialogue box.



Figure 9-20 Main Door Station Adding Interface (Indoor Station)

5. Select the main door station type: **D Series**, or **V Series**.
6. Enter the IP address of the main door station, and press the  tab to save the settings.

- **Adding IP Camera/DVR/DVS/NVR/Doorphone**

Steps:

1. Press the **Settings** tab on the touch screen.
2. Press the **Configuration** tab and enter the admin password (configuration password).
3. Press the **Device** tab to enter the device management interface.
4. Press the **Add Device** tab.




Figure 9-21 Device Selecting Interface (Indoor Station)

5. Press the **IP Camera** tab, **DVR/DVS/NVR** tab, or **Doorphone** tab to pop up corresponding adding dialogue box.

Figure 9-22 IP Camera Adding Interface

Figure 9-23 DVR/DVS/NVR Adding Interface

Figure 9-24 Doorphone Adding Interface

6. Enter the corresponding information.
7. Press the  tab to save the settings.



- For IP camera, the default port No. is 554, and the default user name is admin.
- For DVR/DVS/NVR, the default port No. is 554, the default channel No. is 1, and the default user name is admin.
- For doorphone, the default port No. is 554, and the default user name is admin.

- When the IP camera added successfully, you can get the live view of main door station on the live view interface.
- The indoor station can add 8 doorphones at most, and add 16 cameras and DVR/DVS/NVR channels in total.
- The added IP camera, DVR/DVS/NVR, and doorphone can be edited, deleted, and cleared.

Adding Device (Indoor Extension)



Indoor extension can only connect to the indoor station.

Steps:

1. Press the **Settings** tab on the touch screen.
2. Press the **Configuration** tab and enter the admin password (configuration password).
3. Press the **Device** tab to enter the device management interface.
4. Press the **Indoor Station** tab to pop up the device information dialogue box.

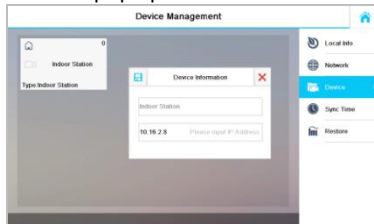



Figure 9-25 Indoor Station Adding Interface (Indoor Extension)

5. Enter the IP address of the indoor station, and press the  tab to save the settings.

SCP (Security Control Panel)

Purpose:


The indoor station supports connecting to the security control panel (SCP). Alarm messages from indoor stations can be automatically uploaded to the center once the indoor station connects to the security control panel.

Steps:

1. Press the **Settings** tab on the touch screen.
2. Press the **Configuration** tab and enter the admin password (configuration password).
3. Press the **Device** tab to enter the device management interface.
4. Press the **SCP** tab to pop up the SCP adding dialogue box.



Figure 9-26 SCP Adding Interface

5. Enter the IP address and port No. of the security control panel.
6. Press the  tab on the upper left corner of the dialog box.



Indoor extension does not support connecting to the security control panel.

Synchronizing Time

Steps:

1. Press the **Settings** tab on the touch screen.
2. Press the **Configuration** tab and enter the admin password (configuration password).
3. Press the **Syncn Time** tab to enter the time synchronizing interface.

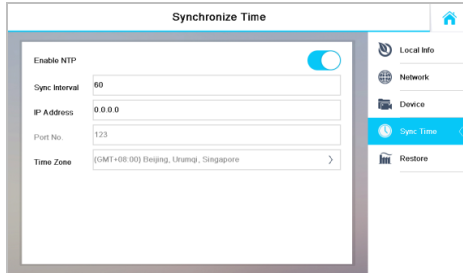




Figure 9-27 Time Synchronizing Interface

4. Switch  to  to enable NTP.
5. Set the synchronizing interval.
6. Enter the IP address of NTP server, and Port No.
7. Select the time zone.



- The default unit of synchronizing interval is minute.
- The default port No. is 123.

Restoring Default Settings

Steps:

1. Press the **Settings** tab on the touch screen.
2. Press the **Configuration** tab and enter the admin password (configuration password).
3. Press the **Restore** tab to enter the default settings restoring interface.
4. Press the **RESTORE** button to restore the default settings and reboot the system.

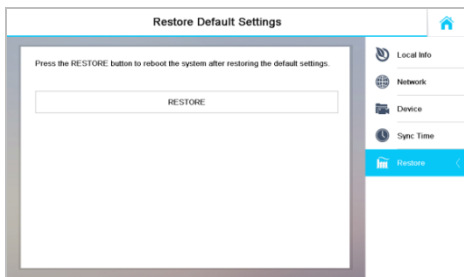



Figure 9-28 Default Settings Restoring

10.4 Call Settings

10.4.1 Adding Contact

Steps:

1. Press the  **Contact List** tab on the user interface to enter the contact list interface.

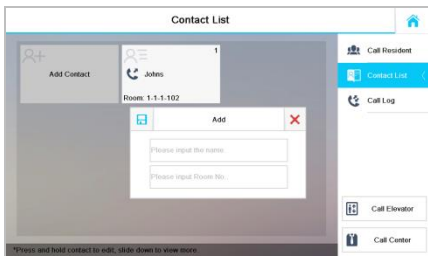

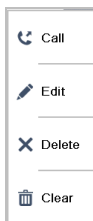


Figure 9-29 Contact List Interface

2. Press the **Add Contact** tab to pop up the contact adding dialogue box.
3. Enter the name and room number of the contact.
4. Press the  tab to save the settings.






- Hold down an added contact to open the contact handling menu.





- Press the **Call** tab to start the video call with the contact.
- Press the **Edit** tab to modify the contact information.
- Press the **Delete** tab to delete the contact.
- Press the **Clear** tab to delete all contacts added in the indoor station.
- Indoor extension does not support this function.
- The DS-KH6201(L) does not support this function.

10.4.2 Calling Resident

Steps:

1. Press the  tab on the touch screen to enter the residents calling interface.
2. Enter the corresponding resident's Room No..
3. Press the  tab to start a video intercom call.
4. Press the  tab to stop the video intercom call.



- Generally speaking, Room No. format should be like 1-2-3-405 as Project 1, Community 2, Building 3, and Room 405. The project No. can be omitted.
- Switch  to  on the upper right corner to enable the camera function.
- The Room No. can be automatically saved into the contact list.
- Indoor extension does not support this function.
- On the call resident interface of DS-KH6201(L) indoor station, there is no **Contact List**, **Call Elevator**, or **Call Center** tab.

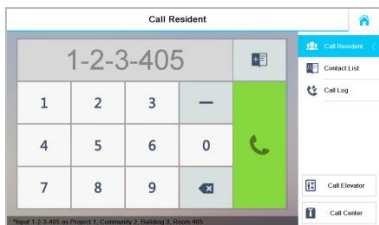


Figure 9-30 Call Resident Interface

10.4.3 Receiving Call



Indoor extension does not support this function.

Purpose:

You can call the indoor station from the door station, the master station, or iVMS-4200 client.

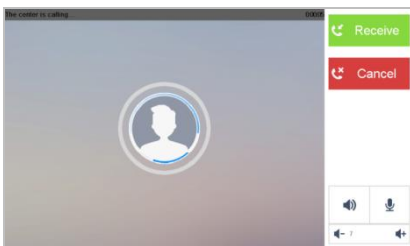



Figure 9-31 Calling from Center (Master Station or iVMS-4200)



Figure 9-32 Calling from Door Station

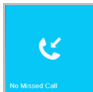


- On the calling from door station interface, press the **Unlock** tab, the unit door will open.

- Press the  tab to capture the live view picture when speaking with the door station. And prompts “Captured” will display on the screen.

10.4.4 Viewing Call Logs

Steps:

1. Press the  tab on the touch screen to enter the call log interface.

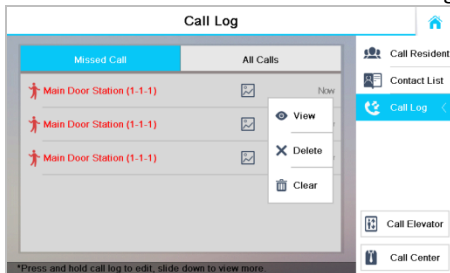
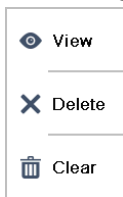


Figure 9-33 Call Logs Interface

2. Press tab **Missed Call** or **All Calls** to view missed call logs or all call logs.



- Indoor extension does not support this function.
- The indoor station saves call logs from door station, outer door station, management center and other indoor stations.
- Hold down a piece of call log to open the call log handling menu.



- Press the **View** tab to enter the live view interface.
- Press the **Delete** tab to delete the piece of call log.
- Press the **Clear** tab to delete all pieces of call logs.
- For the DS-KH6201(L), select a piece of call log and press the **Confirm** key to pop up the captured picture.


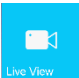
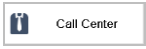
10.4.5 Calling Management Center and Calling Elevator

Purpose:



You can call elevator and call management center from the indoor station/extension.

Calling Management Center

Steps:

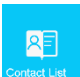

1. Press the  **Contact List** tab to enter the contact list interface, or press the  **Live View** tab to enter the live view interface.
2. Press the  **Call Center** tab.





- Center here refers to the master station and iVMS-4200 client.
- You also can call management center successfully by pressing the  **Center** tab directly.
- For indoor extension, press the  **Center** tab directly on the user interface to call the management center.

Calling Elevator

Steps:

1. Press the  **Contact List** tab to enter the contact list interface
2. Press the  **Call Elevator** tab.



- You also can call the elevator successfully by pressing the  **Call Elevator** tab directly.
- For indoor extension, press the  **Call Elevator** tab directly on the user interface to call the elevator.

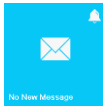
- If calling elevator when it is not in the video intercom with door station, the elevator will not arrive at the floor of the resident.
- If calling elevator during the video intercom with door station, the elevator will arrive at the floor of the door station.

10.5 Information Management

Purpose:

You can view public notice, visitor message, alarm log and capture log on information management interface.

Steps:



1. Press the **No New Message** tab or the **Information Management** tab on the user interface.
2. Press the **Notice** tab to view the public notices of the community.



Figure 9-34 Public Notice Interface

3. Press the **Message** tab to view visitor messages.



Figure 9-35 Visitor Message Interface

4. Press the **Alarm Log** tab to view alarm logs.

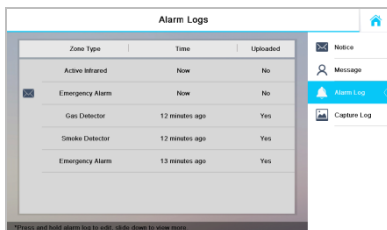


Figure 9-36 Alarm Logs Interface (Indoor Station)

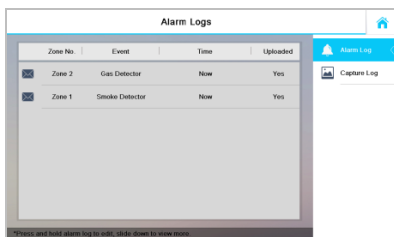


Figure 9-37 Alarm Logs Interface (Indoor Extension)

5. Press the **Capture Log** tab to view capture logs.

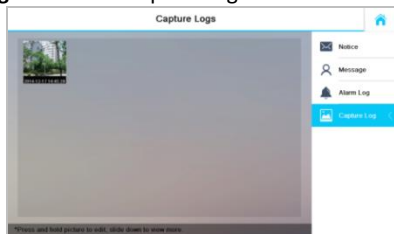


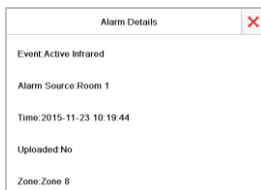
Figure 9-38 Capture Logs Interface (Indoor Station)



Figure 9-39 Capture Logs Interface (Indoor Extension)



- Indoor extension only supports alarm log and capture log.
- For DS-KH8501-WT/DS-KH8500-T/DS-KH8301-WT/DS-KH8300-T models, it requires TF card for saving visitor messages and capture logs of the indoor stations.
- For DS-KH6310/DS-KH6310-W/DS-KH6310-W(L)/DS-KH6210(L) models, it is the internal memory of the indoor station that saves the visitor messages and capture logs.
- Hold down the item to delete or clear all items on each interface.
- On the alarm log interface (indoor station), hold down the piece of the alarm log to open the alarm details interface.



10.6 Live View



- Make sure the IP camera or door station is well-connected.
- Make sure the indoor extension and the indoor station are well-connected.
- The DS-KH6201(L) indoor station does not support the live view of IP camera.

Purpose:

On the live view interface, you can monitor the live view of added door station and IP camera.

Steps:

1. Press the **Live View** tab on the user interface to enter the live view interface.

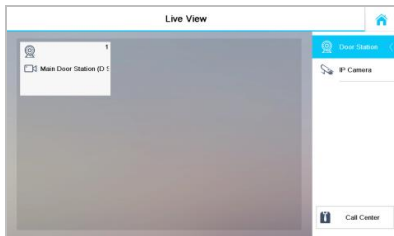


Figure 9-40 Live View Interface

2. Press the **Door Station** tab to enter the live view interface of door station.



Figure 9-41 Live View of Door Station

3. Press the **IP Camera** tab to enter the live view interface of IP cameras.



Figure 9-42 Live View of IP Camera



On the door station live view interface, press the **Unlock** tab to open the unit door.

Appendix

Installation Notice

While installing the indoor station, please make sure that the distance between any two devices is far as possible to avoid the howling and echo. The distance between two devices is recommended to be more than 10 meters.



Here the devices refer to indoor station, outdoor station and master station.

Wiring Cables

Cable	Specification
Power Cord of Door Station	RVV 2*1.0
Network Cable of Door Station	UTP-five Categories
Door Lock Wiring (With Door Magnetic)	RVV 4*1.0
Door Lock Wiring (Without Door Magnetic)	RVV 2*1.0
Exit Button Wiring	RVV 2*0.5
External Card Reader Wiring	RVVP 4*0.75

Specification

Specification of DS-KH8501-WT/DS-KH8500-T

Model	DS-KH8501-WT	DS-KH8500-T
Parameters		
System Parameters		
Processor	High-Performance Embedded SOC Processor	
Operation System	Embedded Linux Operation System	
Video Parameters		
Camera	CMOS 0.3MP, Mechanical	

	Switch	
Video Compression Standard	H.264	
Resolution	640 × 480	
Video Frame Rate	PAL: 25 fps, NTSC: 30 fps	
Display Parameters		
Display Screen	10-Inch Colorful TFT LCD	
Resolution	1024 × 600	
Operation Method	Capacitive Touch Screen, Touch Key	
Operation Interface	Flattened UI Operation Interface	
Audio Parameters		
Audio Input	Build-in Omnidirectional Microphone	
Audio Output	Build-in Loudspeaker	
Audio Compression Standard	G.711 U	
Audio Compression Rate	64 Kbps	
Audio Quality	Noise Suppression and Echo Cancellation	
Network Parameters		
Ethernet	10/100 Mbps Self-Adaptive Ethernet	
Network Protocol	TCP/IP, SNMP, SIP, RTSP	
Alarm Parameters		
Alarm Input	8-ch Alarm Input Sensor	
Device Interfaces		
Internet Access	1 RJ45 10/100 Mbps Self-Adaptive Internet Interface	
RS-485	2 RS-485 Half-Duplex Port	
I/O Output	2	
TF Card (Micro SD Card)	TF Card; Supporting Max. 32GB	
Other Parameters		
Power Supply	DC 24V, Power Over Network Cable (DS-KAD606, DS-KAD612)	
	DC 12V	
Power Consumption	≤10 W	

Working Temperature	-10° C to +55° C (14° F to 131° F)
Working Humidity	10% to 90%
Dimension (L x W x H)	260 mm × 180 mm × 18 mm (10.2" × 7.1" × 0.7")
Certification	FCC, IC, CE, C-TICK, ROHS, REACH, WEEE

Specification of DS-KH8301-WT/DS-KH8300-T

Model	DS-KH8301-WT	DS-KH8300-T
Parameters		
System Parameters		
Processor	High-Performance Embedded SOC Processor	
Operation System	Embedded Linux Operation System	
Video Parameters		
Camera	CMOS 0.3MP, Mechanical Switch	
Video Compression Standard	H.264	
Resolution	640 × 480	
Video Frame Rate	PAL: 25 fps, NTSC: 30 fps	
Display Parameters		
Display Screen	7-Inch Colorful TFT LCD	
Resolution	1024 × 600	
Operation Method	Capacitive Touch Screen, Touch Key	
Operation Interface	Flattened UI Operation Interface	
Audio Parameters		
Audio Input	Build-in Omnidirectional Microphone	
Audio Output	Build-in Loudspeaker	
Audio Compression Standard	G.711 U	
Audio Compression Rate	64 Kbps	
Audio Quality	Noise Suppression and Echo Cancellation	
Network Parameters		
Ethernet	10/100 Mbps Self-Adaptive Ethernet	
Network Protocol	TCP/IP, SNMP, SIP, RTP	

Alarm Parameters	
Alarm Input	8-ch Alarm Input Sensor
Device Interfaces	
Internet Access	1 RJ45 10/100 Mbps Self Adaptive Internet Interface
RS-485	2 RS-485 Half-Duplex Port
I/O Output	2
TF Card (Micro SD Card)	TF Card; Supporting Max. 32GB
Other Parameters	
Power Supply	DC 24V, Power Over Network Cable (DS-KAD606, DS-KAD612)
	DC 12V
Power Consumption	≤10 W
Working Temperature	-10° C to +55° C (14° F to 131° F)
Working Humidity	10% to 90%
Dimension (L x W x H)	217 mm × 142 mm × 26 mm (8.5" × 5.6" × 1.0")
Certification	FCC, IC, CE, C-TICK, ROHS, REACH, WEEE

Specification of DS-KH6310-W/DS-KH6310

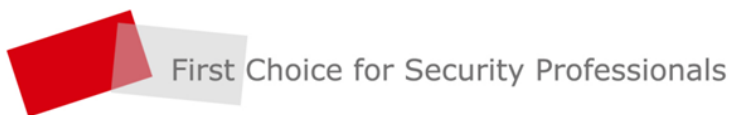
Model	DS-KH6310-W	DS-KH6310
Parameters		
System Parameters		
Processor	High-Performance Embedded SOC Processor	
Operation System	Embedded Linux Operation System	
Display Parameters		
Display Screen	7-Inch Colorful TFT LCD	
Resolution	800 × 480	
Operation Method	Capacitive Touch Screen, Physical Button	
Operation Interface	Flattened UI Operation Interface	
Audio Parameters		
Audio Input	Build-in Omnidirectional Microphone	
Audio Output	Build-in Loudspeaker	
Audio Compression	G.711 U	

Standard	
Audio Compression Rate	64 Kbps
Audio Quality	Noise Suppression and Echo Cancellation
Network Parameters	
Ethernet	10/100 Mbps Self-Adaptive Ethernet
Network Protocol	TCP/IP, SNMP, SIP, RTSP
Alarm Parameters	
Alarm Input	8-ch Alarm Input Sensor
Device Interfaces	
Network Interface	1 RJ45 10/100 Mbps Self-Adaptive Ethernet Interface
RS-485	1 RS-485 Half-Duplex Port
I/O Output	1
Other Parameters	
Power Supply	DC 24V, Power Over Network Cable (DS-KAD606, DS-KAD612)
	DC 12V
Power Consumption	≤10 W
Working Temperature	-10° C to +55° C (14° F to 131° F)
Working Humidity	10% to 90%
Dimension (L x W x H)	195.8 mm × 132.8 mm × 17.5 mm (7.7" × 5.2" × 0.7")
Certification	FCC, IC, CE, C-TICK, ROHS, REACH, WEEE

Specification of DS-KH6310-W(L)/DS-KH6210(L)

Model Parameters	DS-KH6310-W(L)	DS-KH6210(L)
System Parameters		
Processor	High-Performance Embedded SOC Processor	
Operation System	Embedded Linux Operation System	
Display Parameters		
Display Screen	7-Inch Colorful TFT LCD	
Resolution	800 × 480	

Operation Method	Capacitive Touch Screen, Physical Button	Physical Button
Operation Interface	Flattened UI Operation Interface	
Audio Parameters		
Audio Input	Build-in Omnidirectional Microphone	
Audio Output	Build-in Loudspeaker	
Audio Compression Standard	G.711 U	
Audio Compression Rate	64 Kbps	
Audio Quality	Noise Suppression and Echo Cancellation	
Network Parameters		
Ethernet	10/100 Mbps Self-Adaptive Ethernet	
Network Protocol	TCP/IP, SNMP, SIP, RTSP	
Alarm Parameters		
Alarm Input	2-ch Alarm Input Sensor	
Device Interfaces		
Network Interface	1 RJ45 10/100 Mbps Self-Adaptive Ethernet Interface	
Other Parameters		
Power Supply	DC 24V, Power Over Network Cable (DS-KAD606, DS-KAD612)	
	DC 12V	
Power Consumption	≤10 W	
Working Temperature	-10° C to +55° C (14° F to 131° F)	
Working Humidity	10% to 90%	
Dimension (L x W x H)	195.8 mm × 132.8 mm × 17.5 mm (7.7" × 5.2" × 0.7")	
Certification	FCC, IC, CE, C-TICK, ROHS, REACH, WEEE	



First Choice for Security Professionals